

# OPERATION FAIRLIFE

## -NEW MEXICO-

(WOODCREST DAIRY)

AN ANIMAL RECOVERY MISSION UNDERCOVER INVESTIGATION



Presented By: Animal Recovery Mission (ARM)

**Contact Information:**

**Address:** PO Box 403344, Miami Beach,  
Floria 33140

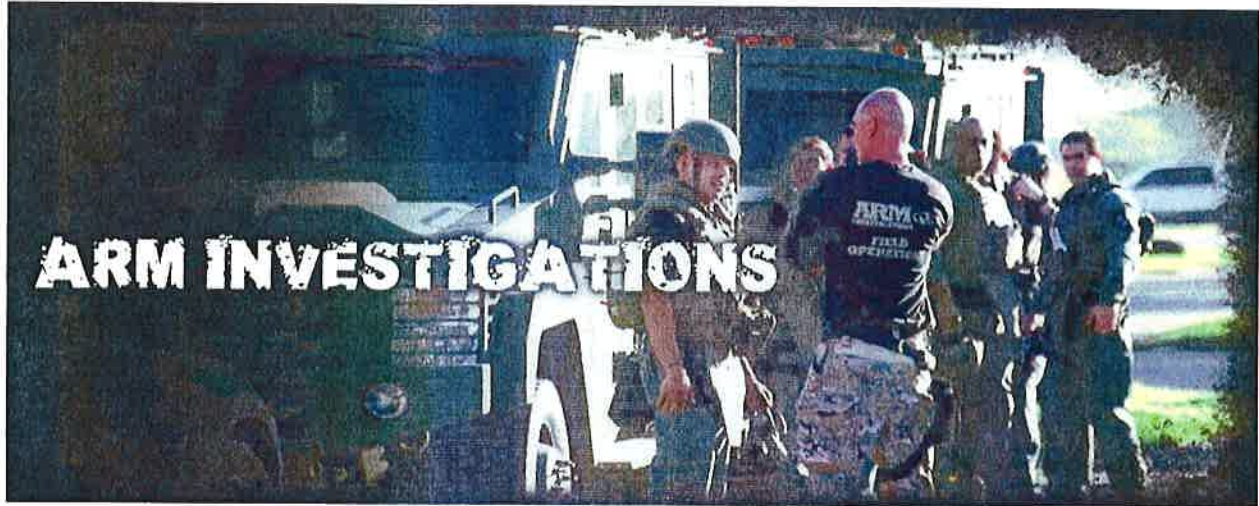
**Email:** [kudo@arminvestigations.org](mailto:kudo@arminvestigations.org)

**Phone:** 305 494 2225

**Wed URL:** [www.animalrecoverymission.org](http://www.animalrecoverymission.org)



**A VANGUARD DEFENSE ORGANIZATION**



The Animal Recovery Mission (ARM), is a vanguard investigative animal welfare organization that was developed in 2010 by Richard Couto, shortly after he was exposed to one of Miami's darkest and most brutal animal cruelty operations. Upon this discovery of illegal animal slaughter farms and the black market horse meat trade, Couto, also known as 'Kudo,' invoked his vision of exposing and implementing solutions for extreme criminal acts towards animals into reality and created an unstoppable team who are dedicated to our organizations cause.

ARM Investigations has been carefully constructed as a direct-action organization. We conduct innovative investigative tactics to gather compelling evidence. ARM collaborates with local law enforcement, State attorneys, environmental protection agencies and The Animal Legal Defense Fund to produce concrete evidence to put an end to criminal acts involving animal torture.

ARM has since become the foremost expert organization in illegal horse slaughter. We specialize in condemning illegal animal slaughter farms in the United States. Our investigations, however, are not limited to slaughter farms as we are also actively investigating the black market horse meat trade, bestiality, underground animal fighting rings, fox & coyote penning games, and bear bile farms, to name a few, as well as the preservation of Wild Mustangs.

Succeeding in our investigations and exposing the truth as well as the eradication of these illegal practices have produced life changing results and permanent solutions. ARM's goals and vision is to constantly strive to raise the bar for the welfare of animals and to prevent and reduce their pain, fear and suffering.

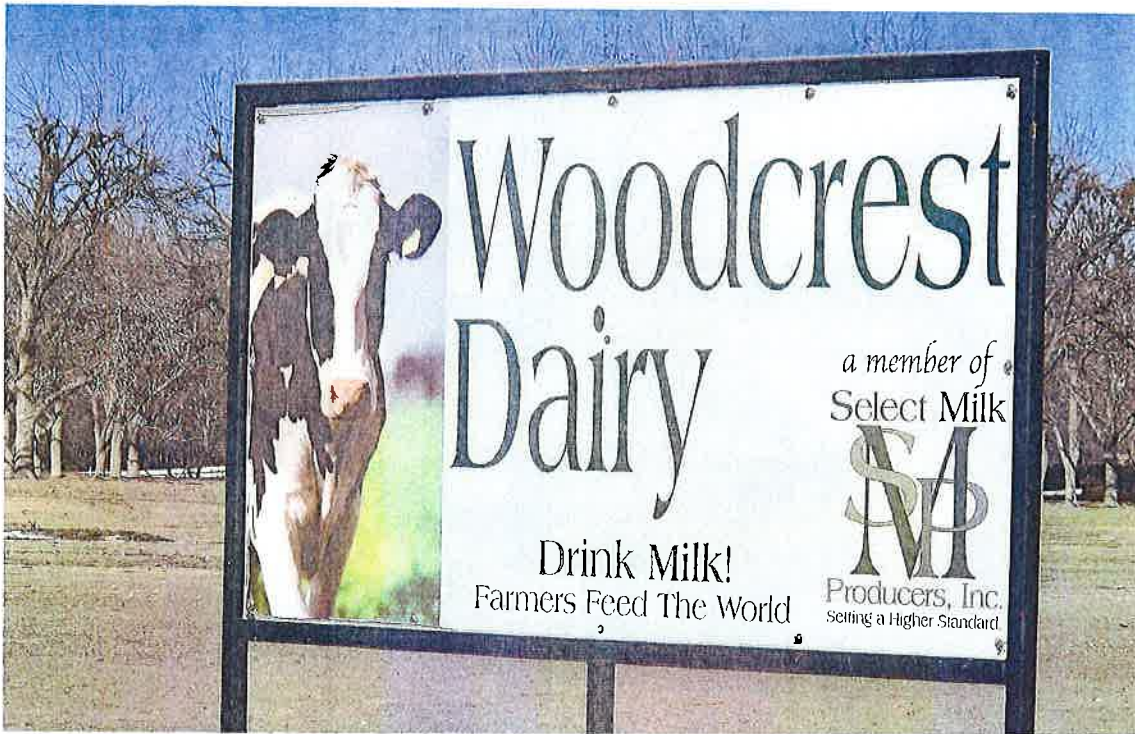
As an organization we strive to be the defending force for destitute animals and to make significant improvements in how they are treated by exposing the truth, implementing laws to protect and educating the public on these illegal and barbaric practices. ARM prides it self on taking up the challenges that no one else will.

Our mission is to be an uncompromising defending force for the welfare of animals, in addition to putting an end to and preventing pain, suffering and torture inflicted as a result of inhumane practices.



---

## SUMMARY OF INVESTIGATION



At Woodcrest Dairy, located in Roswell, New Mexico, Animal Recovery Mission (ARM) uncovered unprecedented cruelty toward birthing dairy cows as part of a widespread and deeply disturbing cruelty, abuse, and neglect during a three-month-long undercover investigation. This facility supplies raw milk to Coca-Cola's fairlife and Core Power brands through its bottling plant in Dexter, NM.

ARM is calling for an end to this brutality, criminal charges for those responsible, and accountability from Coca-Cola for enabling and profiting from ongoing animal mistreatment and its perpetuation of poor welfare practices.

In December 2024, ARM launched its investigation at Woodcrest Dairy after being hired as a milker, tasked with feeding, caring for, and assisting with the dairy cows' needs. By February 2025, the investigator was promoted to the calf birthing and medical areas, typically reserved for pregnant and sick animals. Instead of receiving care, animals were subjected to horrifying abuse, including physical beatings, neglect, and forced labor.

ARM's findings also include extreme calf mistreatment, with workers attempting to prematurely and violently induce labor. Many newborns were dropped on their heads, resulting in fatal trauma. Immediately after birth, all calves were separated from their mothers, tossed into transport vehicles, and relocated elsewhere in New Mexico.

---

---

### **Facility Ownership and Cooperatives:**

Woodcrest Dairy is owned and operated by the Meulen family. The father (Randy 505-377-4164), mother (Denise 505-264-2090), and their son (Jake 505-377-4177). All three are actively involved in daily operations and are responsible for decision-making at the facility. The founder of woodcrest dairy is also one of the founders of the Select Milk Co.

With roughly 15,000 milking cows, Woodcrest is a large-scale producer and member of the Select Milk Co-Op, which is owned by Mike and Sue McCloskey — founders of fairlife. Select Milk also contracts Ruan Trucking for regular raw milk pickups from this site.

ARM's footage exposes a gross contradiction between Coca-Cola's public claims and its actual practices. Despite fairlife's promises to source exclusively from "cruelty-free" dairies, the evidence from Woodcrest proves otherwise.

The pattern of animal cruelty documented at Woodcrest Dairy is detailed below. ARM is calling for immediate action:

1. Immediate improvements to the conditions of cows at Woodcrest Dairy and other farms in the national fairlife supply chain to ensure compliance with basic animal welfare standards.
2. Arrest and prosecution of Woodcrest Dairy's owners, managers, and employees responsible for animal cruelty and neglect.
3. Accountability from Coca-Cola and fairlife for profiting from and enabling these abuses.

Over the period of three months, ARM recorded daily interactions and alarming instances of violence performed by employees and managers and sanctioned by the dairy's owners.

### **Evidence of Animal Cruelty:**

ARM documented a series of State violations of extreme animal cruelty laws committed by managers and employees at Woodcrest Dairy, including:

Unprecedented violence toward birthing cows:

- **Brutal Birthing Tactics:** Heavily pregnant cows are forcibly confined in head catch gates, where they are kicked, prodded, and harassed to accelerate labor. Employees were observed reaching into the cows' uteruses to attach chains and ropes to the unborn calves, tying the other end to corral panels. They then jumped on the taut ropes to forcibly extract the calves, often before the mothers or babies were ready. The mothers screamed in pain and distress throughout the process.
  - **Newborn Abuse:** Calves were delivered with such violence that they frequently hit the concrete headfirst, dying from blunt force trauma.
-



- 
- **Excessive Sadistic Violence:** While restrained in head gates, animals were punched, kicked, and beaten. Some employees appeared to derive pleasure from inflicting pain by sparring and using the cows' heads as punching bags.

Systemic cruelty:

- **Milking Parlor Torment:** Cows were electroshocked, whipped, kicked, dragged, and struck with shovels, pipes, and chains. Tails were violently snapped, bones broken, and cows left hemorrhaging. Nose rings were yanked using ropes and chains to force compliance.
- **Unethical Milking Practices:** Workers work in a harried and careless manner and used excessive force during milk extraction, striking cows in the face, body, and genitals with wrenches and other tools.
- **Forced Separation:** Hours after birth, calves were forcibly removed from their mothers without concern for emotional or physical well-being.
- **Slow, Cruel Deaths:** Suffering and mortality rates of both cows and calves are high and visible with regular discarding of carcasses being dumped next to a manure piles at Woodcrest.
- **Psychological Torture:** Workers used Coca-Cola bottles filled with coins to shake in animals' faces, attempting to startle them into moving to the milking parlor.
- **Exposure to Harsh Conditions:** Animals were left to suffer in freezing winter conditions, exposed to snow and sleet for days.

Improper Veterinary Care:

- Injured or sick animals were denied necessary veterinary care. Some were left untreated for days, leading to worsening conditions and even death.
- When medicine is administered, it is always with extreme force, such as ramming 3ft metal rods down an animal's throat without any consideration or patience, causing severe pain and trauma.
- Medical devices are also misused as a reprimanding method, where cows are poked and struck in the eyes.

The Meulen family, who actively operate the dairy, and their managers, have not only permitted this violence but have participated in it or failed to deter the cruelty.

### **Corporate Responsibility and Systemic Failure:**

Animal welfare advisory committees oversee the animals and veterinary personnel from both Woodcrest Dairy and Coca-Cola corporation with regular audits, making it highly unlikely that executives, including Select Milk owners, Mike and Sue McCloskey, were unaware of these ongoing violations. Owners of Woodcrest have strong ties to select Milk and the McCloskey family as they are board members and or officers of Select Milk. Select is a Texas-based company.

---

---

Despite Coca-Cola's investment of over \$40 million in animal welfare reforms—including video monitoring, unannounced audits, veterinary inspections, and employee training—ARM's footage is evidence of the ongoing failure of these reforms to prevent widespread abuse at fairlife suppliers' facilities.

---

# **REPORT RECIPIENTS**

---





## **Report Recipients**

### **Chaves County Sheriff's Office**

1st Mary's Place #130  
Roswell, NM 88203

### **Department of Agriculture**

1050 Stewart Street  
Las Cruces, NM 88003

### **Department of Health**

200 East Chisum St  
Roswell, NM 88203

### **Food and Drug Administration**

1201 Main St Suite 7200  
Dallas, TX 75204

### **State Veterinarian**

300 San Mateo BLVD. Suite 1000  
Albuquerque, NM 87108

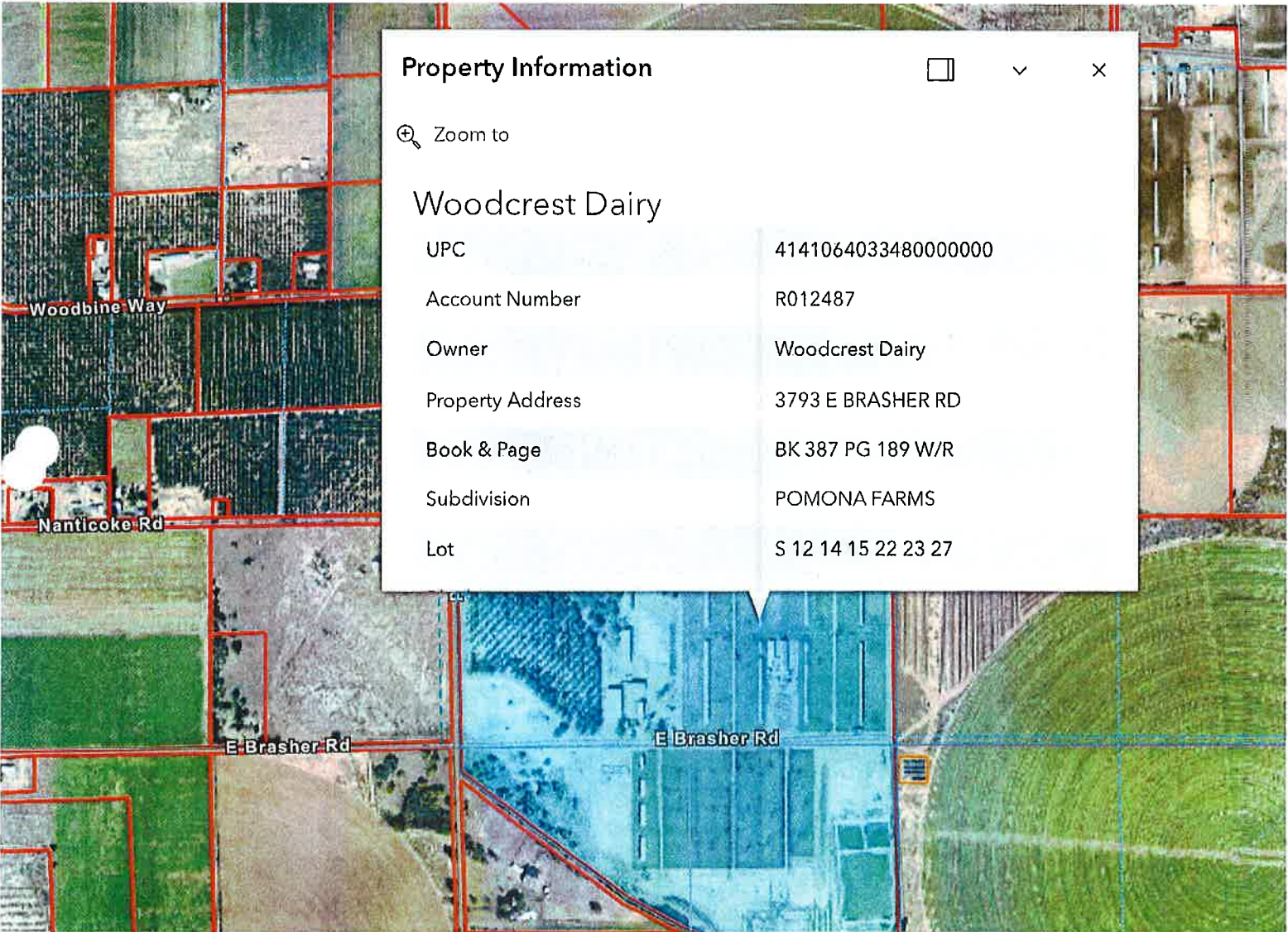
### **USDA**

300 North Pennsylvania Ave  
Roswell, NM 88201

---

# LOCATION

---



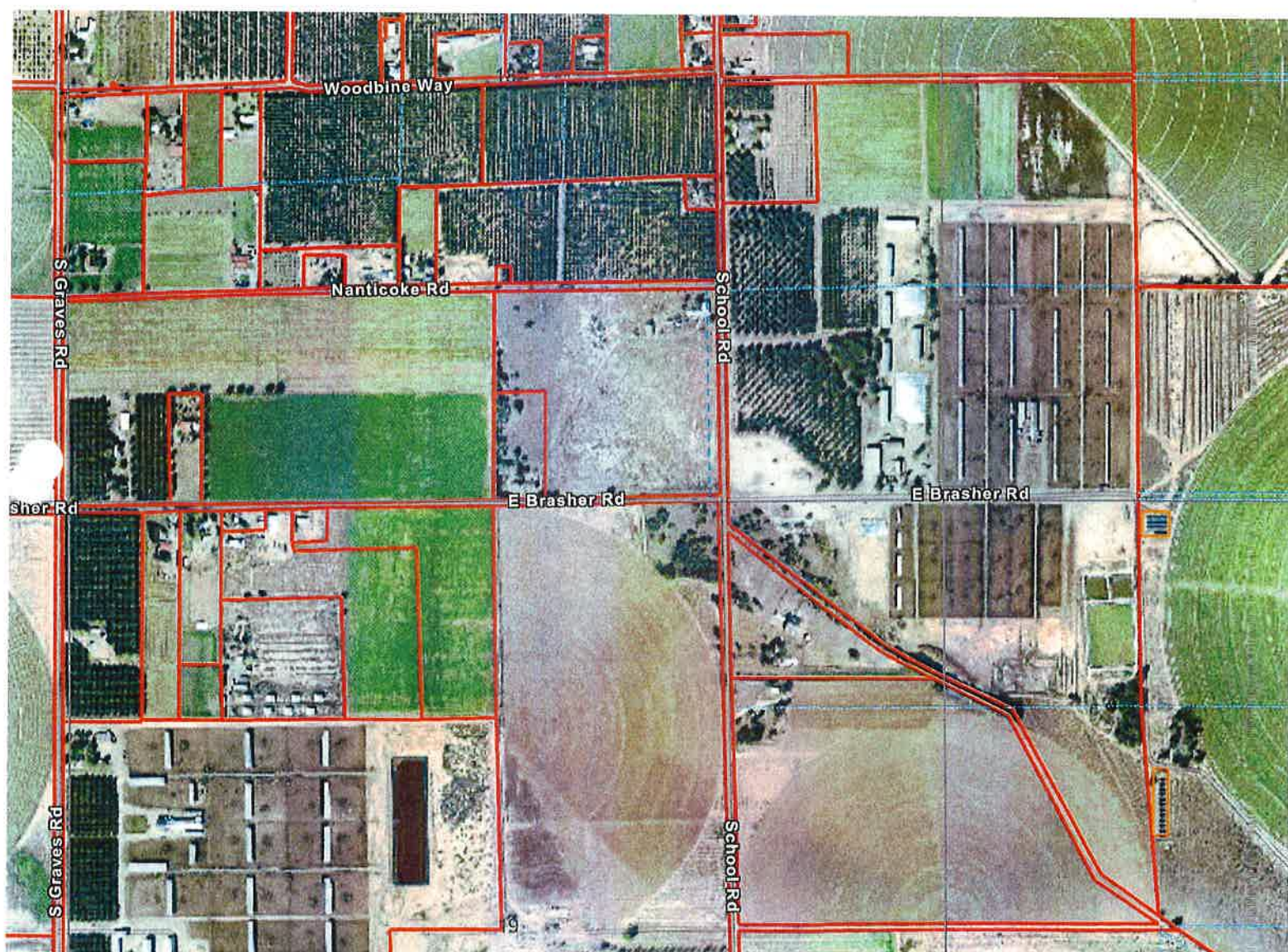
## Property Information

🔍 Zoom to

### Woodcrest Dairy

UPC	4141064033480000000
Account Number	R012487
Owner	Woodcrest Dairy
Property Address	3793 E BRASHER RD
Book & Page	BK 387 PG 189 W/R
Subdivision	POMONA FARMS
Lot	S 12 14 15 22 23 27

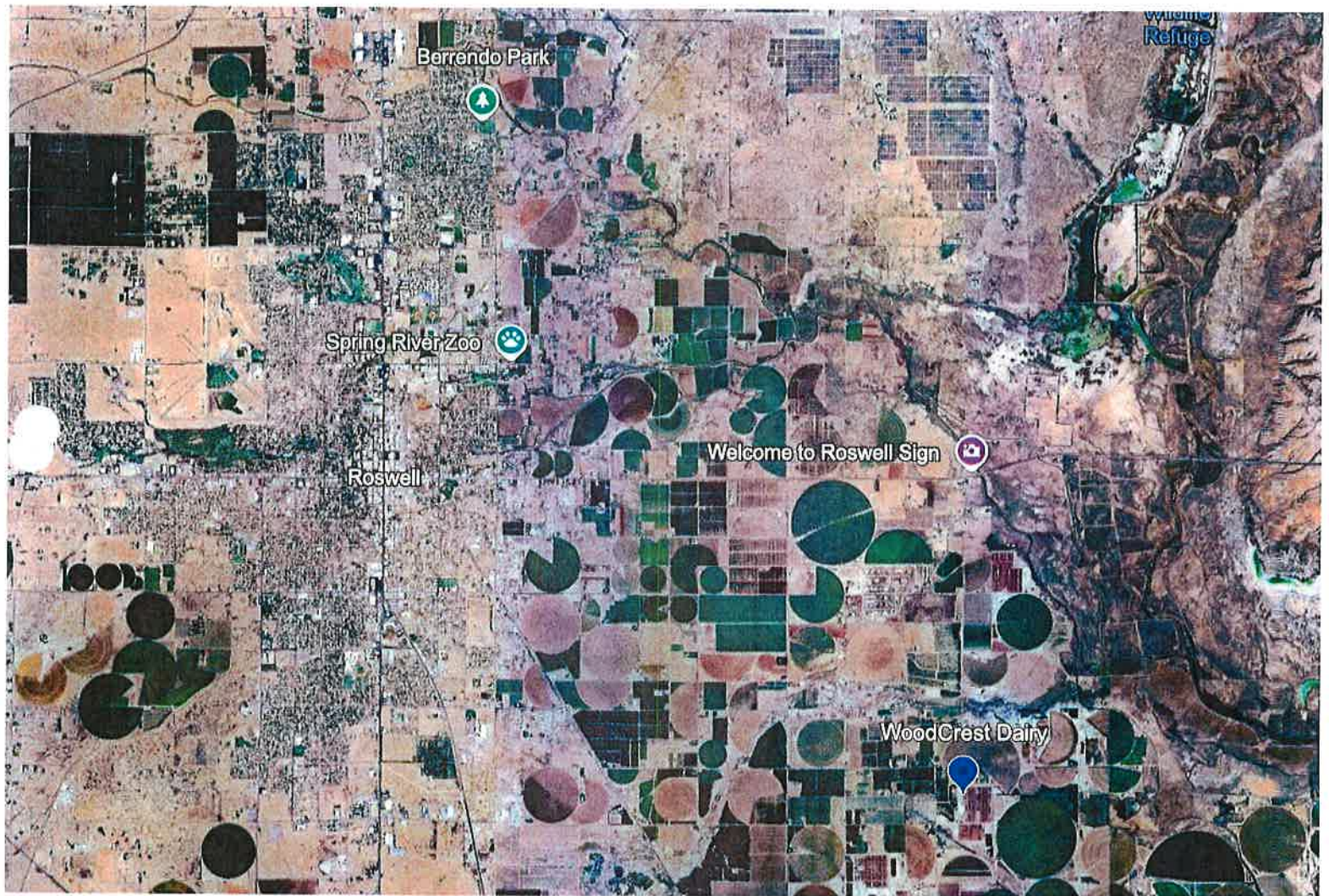




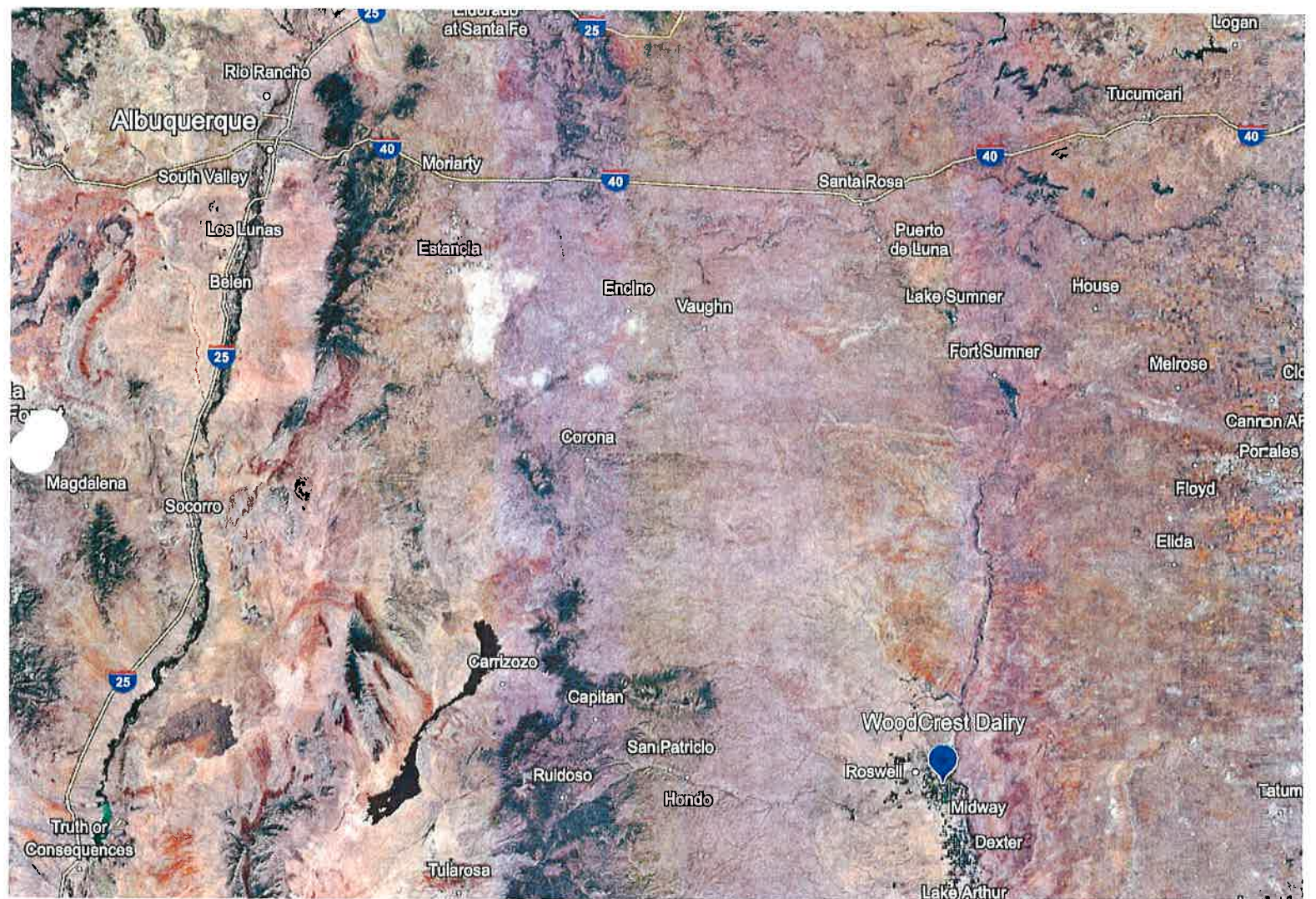












# Woodcrest Dairy

Farm in Roswell, NM



Directions



Nearby



3793 E Brasher Rd, Roswell, NM 88203



(575) 624-0122



Suggest an edit · Your business? **Claim now**

## Add more information



Add website



Add hours



Add photos

## Social profiles



Facebook

## Woodcrest Dairy



3793 E Brasher Rd  
Roswell, NM 88203

575-624-0122

★★★★★  
( 7 Reviews )

CLAIM YOUR LISTING »

LISTING INCORRECT?



CALL



DIRECTIONS



REVIEWS

## KEY CONTACTS



Randy Meulen  
Owner





# Founder, of Woodcrest Dairy & Select Milk

## Gary Verhoeven

July 10, 1945 — September 10, 2015

Gary Lee Verhoeven was born on July 10, 1945, to Bill and Sue Verhoeven. He went Home to be with his Lord and Savior on Sept. 10, 2015. Gary was raised in a loving Christian home in Bellflower, California, where he graduated from Valley Christian School. In 1964 he married his high school sweetheart, Gertrude Visser. Soon after, they moved to Chino, California, where they raised their three daughters, Denise, Stephanie, and Shelly. In 1992 Gary moved his family to Roswell, New Mexico, to fulfill his lifelong dream of dairy farming and how he loved working on his dairy. He was a founding member of Select Milk Producers and served as a Board Member, Officer, and Committee Chairman since 1994. Although Gary saw some good years in the dairy industry, God's plan was to make him rich in the grace, mercy, forgiveness and love of his Lord and Savior Jesus Christ. Gary joined the Emmaus Community and later became part of Kairos Prison Ministry team.

Gary truly enjoyed time spent with his family and friends. After being diagnosed with cancer in Sept. 2013, the past two years were filled with wonderful memories marking off his bucket list with his family.

He will be greatly missed by his wife Gertrude, his children and grandchildren - Denise and Randy Vander Meulen (Rachelle and Shaun O'Brien, Natalie, and Jacob), Stephanie and Mike Visser (Jared, JP, and Justin), Shelly and Jeff Lackey (Jachan and Jayce). He is also survived by his siblings Marcia Fikse, Sandy and John Van Dyk, and Cotton and Betsy Verhoeven and many special nieces and nephews. He was preceded in death by his parents.

The family is grateful for the care he received at MD Anderson Cancer Center in Houston, and for his care by Dr. Evan Nelson, Dr. Hamid Feroze, and Dr. Tareq Braik of Roswell. We would like to express our heartfelt thanks to Jodie Rogers of Gentiva Hospice for her compassion, kindness and loving care shown to him the last 4 months.

A visitation will be held at LaGrone Funeral Chapel from 5:00 pm to 8:00 pm, Thursday, September 17, 2015. A graveside service will be held 10:30 am, Friday, September 18, 2015 at

# REFERENCES



 FairLife, LLC 

 FairLife, LLC, 6845 Old Chisum Trail,  
Dexter, NM 88230

 6HMJ+Q8 Dexter, New Mexico

 Save to project

FairLife, LLC











# fa!rlife®



## FAIRLIFE LLC

fairlife, LLC, started with a vision for providing better nutrition for the world. Providing consumers with the protein and calcium that they are looking for in their busy lives. The highly nutritious milk products of fairlife come from the 99 family owned dairies of Select Milk Producers. Select was established in 1994 with the goal of producing exceptional quality milk while changing the face of the dairy industry through cutting edge innovation, dedication to animal care and comfort, and a commitment to agricultural sustainability. Select Milk Producers entered into a partnership with The Coca-Cola Company in 2012 to form fairlife, LLC. The Coca-Cola Company is the distribution partner for the products that fairlife creates, market and sells. fairlife, LLC, is committed to improving the health and vitality of the planet and its people.





# Woodcrest Dairy

Drink Milk!  
Farmers Feed The World

a member of  
Select Milk

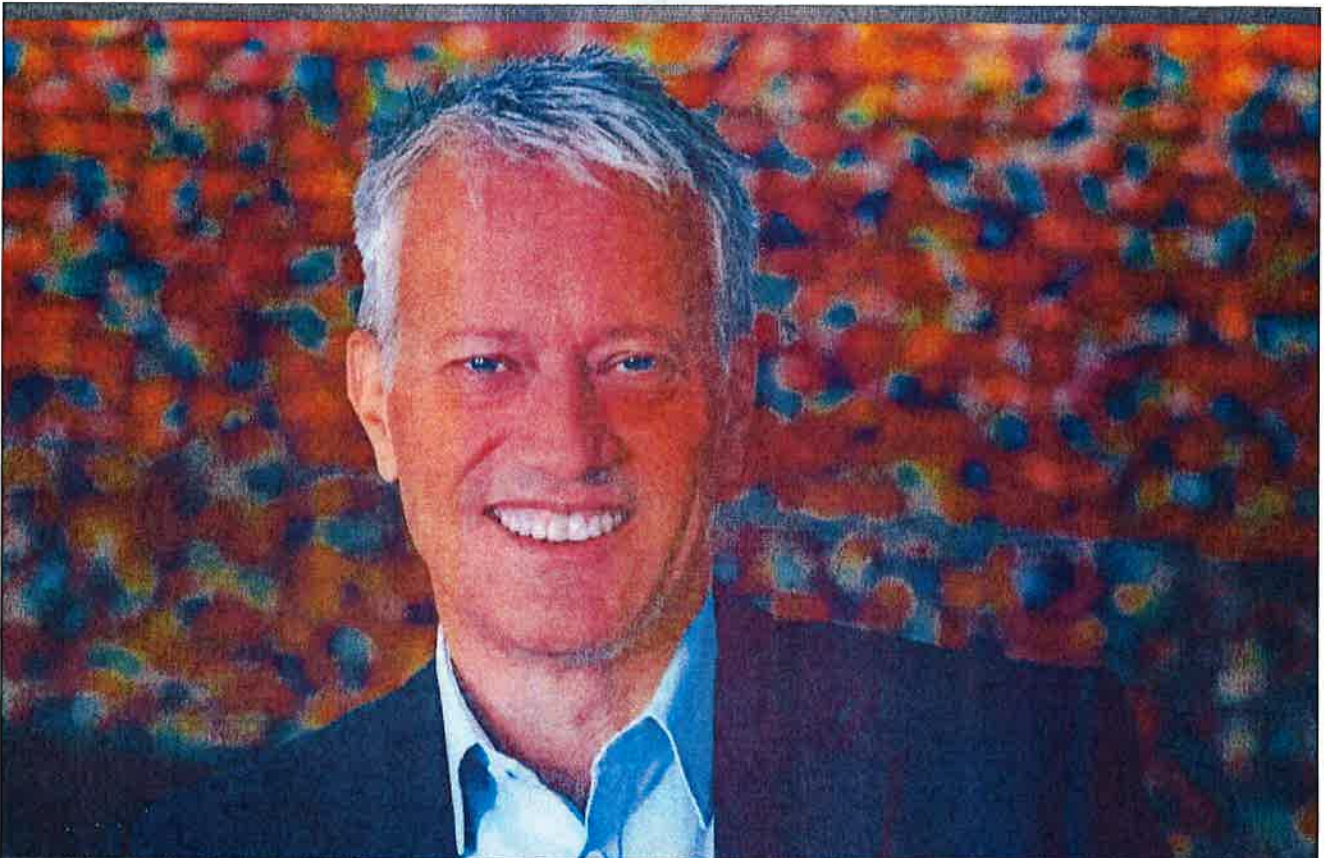


Producers, Inc.  
Setting a Higher Standard.





**TIM DOELMAN**  
Chief Executive Officer  
fairlife, LLC



compensation for James Quincey, chair and CEO of Coca-Cola, was \$24.7 million, according to company documents

we believe in  
better care for  
animals

# Mandating Strong Animal Welfare Standards

As a dairy processor that doesn't own farms or cows, we rely on the partnership of the dairy co-ops that we purchase milk from. The dairy co-ops, along with industry advisors and experts, share in the development, evaluation and implementation of the animal welfare program that is required of any milk supplier to fairlife.



## All co-op farms that supply to fairlife are required to:

### FARM Program

Supplying dairies must be evaluated against the National Dairy Farmers Assuring Responsible Management (FARM) Animal Care program standards and maintain FARM certification.

### Regular Audits

Supplying dairies must participate in and meet the standards of regular animal welfare audits conducted by a certified 3rd-party organization.

### Zero Tolerance Policy

Supplying dairies are required to have signed Cow Care agreements that requires all employees to adhere to a zero-tolerance policy for animal abuse.

## Standards and Oversight

fairlife requires all suppliers to adhere to industry standards and its own requirements. Beyond care, all suppliers are also required to meet standards for on-farm worker care and training, biosecurity and environmental standards.

## **Audit Cadence**

fairlife requires its supplying farms to be audited more frequently than the cadence required by industry standards.

## **Addressing Issues**

More frequent audits help quickly identify issues and take swift corrective action. This also helps reinforce a culture of transparency among supplying farms and their employees.

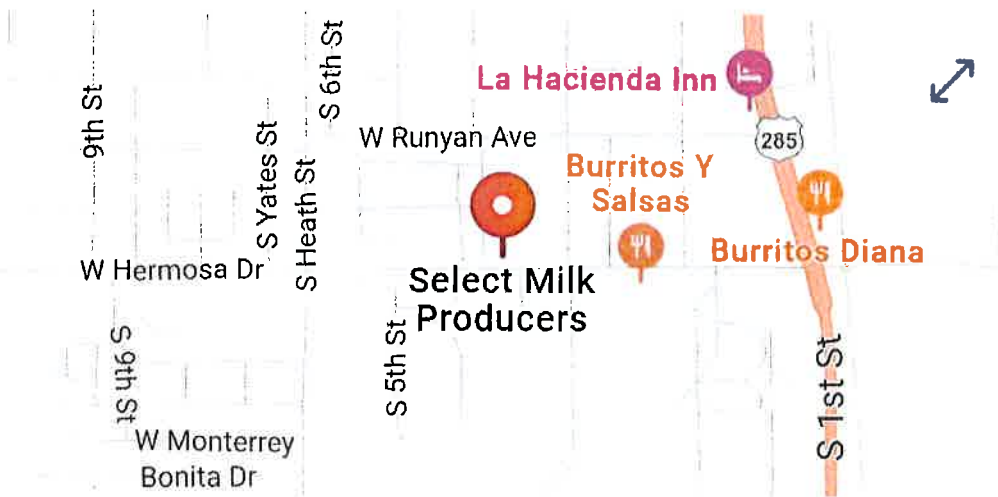
## **Leveraging Technology**

We work with our partners to invest in camera monitoring and scaling AI technology for additional oversight. We believe in the future of on-farm camera monitoring, as it can move beyond the cow-human interaction to help farmers in other areas such as feed management, health surveillance and milking parlor analytics.

# **Enforcing the Requirements of Strong Animal Care**

fairlife continues to invest and take measures to improve animal welfare at supplying farms and across the industry.

All findings from regular, 3rd party audits and site visits performed by the fairlife Animal Welfare Team are thoroughly investigated and timing corrective actions are taken.



## Select Milk Producers

Agriculture association in Artesia, NM



Website



Directions



320 W Hermosa Dr, Artesia, NM 88210



(214) 568-9000



**Open** · Closes 5 PM ▼



Suggest an edit · [Your business? Claim now](#)

### Add more information



Add photos

Select Milk Producers operates as a wholesale dairy producer that offers non-fat dried milk, cream, and butter. [See more](#)



Select Milk Producers, Inc.

0 followers

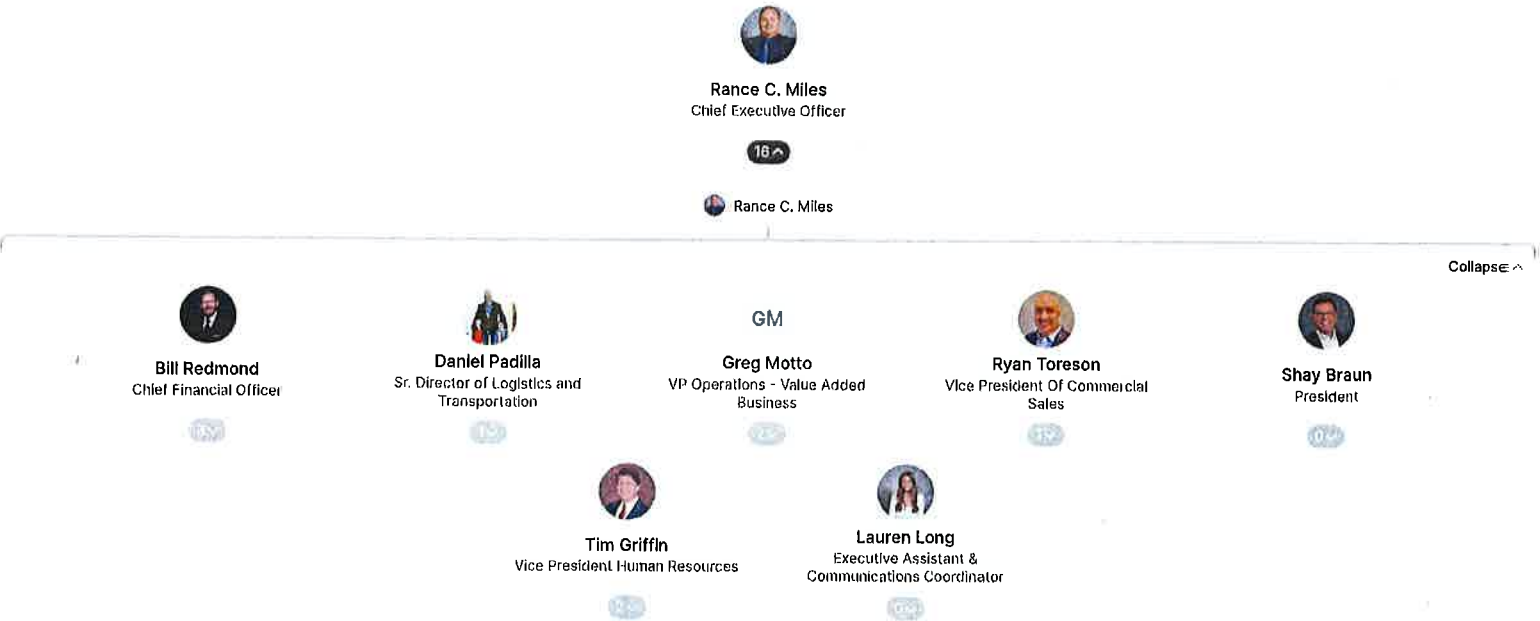
Follow



Select Milk Producers operates as a wholesale dairy producer that offers non-fat dried milk, cream, and butter.

Industries	Headquarters	Employees	Links
Food & Beverage	Artesia, United States	201-500	<a href="#">in</a> <a href="#">e</a>

Org chart





Select Milk Producers, Inc.  
<https://selectmilk.com>

## Select Milk Producers, Inc. – Setting a Higher Standard. It is who we ...

Select Milk Producers, Inc. takes that guesswork out. You can rest assured that the more than 9 billion pounds of milk that Select Milk produces each year comes from innovative...

### Our Family

Continental Dairy Facilities is a state of the art powder milk and butter facility th...

### SMP LOG IN

All together Select produces and markets over 6 billion pounds of milk annually. ...

### Fair Oaks Farms

Fair Oaks Farms brings Reduce, Reuse, Recycle to a whole new light. Our entire ...

### GreenLink Partners

GreenLink is the premier professional services partner to agricultural producer...

### Majestic Butter

why choose majestic butter? By combining traditional methods with...

### Midwest Cheese

MWC processes over 2.9 billion pounds of milk, and will produce in excess of 300 ...

### Mill Haven Foods

New Lisbon, WI & Tomah, WI Mill Haven Foods We take pride in loyalty and ...

### Select Custom Solutions

Select Custom Solutions, based in La Crosse, WI, specializes in modern ...

### Select Services

Since 2012, Select Services has currently In Progress and completed over 1 "billion...

### Southwest Cheese

The partnerships we build with our customers, partners, milk producers, loc...

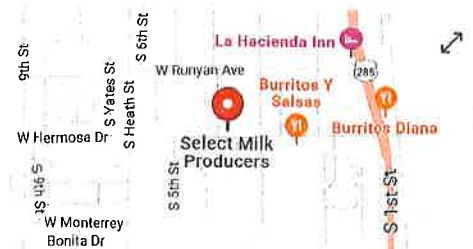
## See Select Milk New Mexico

Sponsored



Parmalat Whole Milk 1 Qt (Pack Of 6)  
**\$36.85**  
Amazon.com  
★★★★★ 440

See more shopping results for **select milk new mexico**



## Select Milk Producers

Agriculture association in Artesia, NM

Website

Directions

320 W Hermosa Dr, Artesia, NM 88210

(214) 568-9000

Open · Closes 5 PM

Suggest an edit · Your business? Claim now

Add more information

Add photos

 **Select Milk Producers**  
Agriculture association  
320 W Hermosa Dr, Artesia, NM 88210

 [WEBSITE](#)  [DIRECTIONS](#)

 [selectmilk.com](https://selectmilk.com)  
<https://selectaspx40.selectmilk.com>

Select Milk Producers, Inc.

## Chisum Trail Dairy, LLC



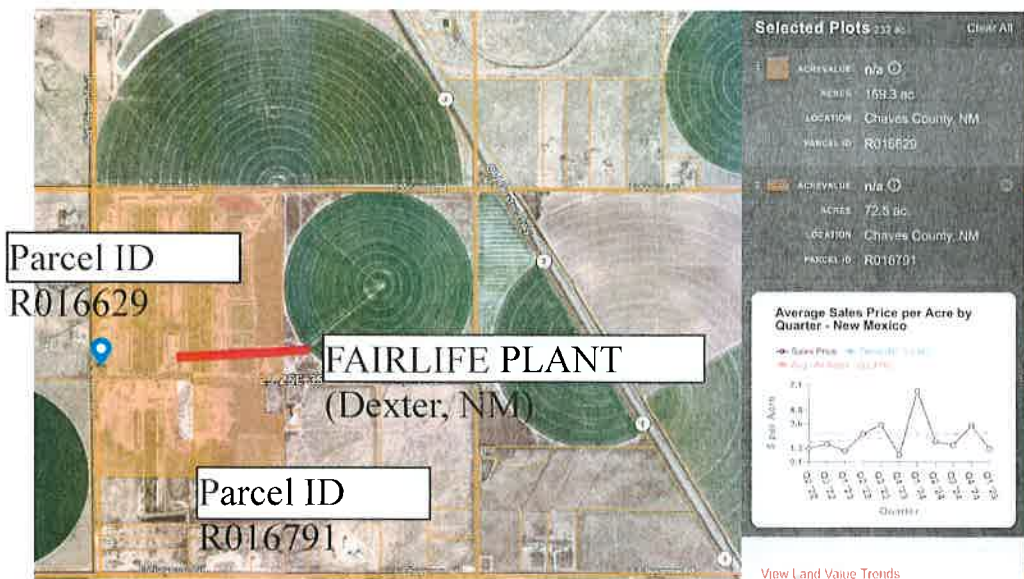
**File  
Amendment**



**Request  
Certificate**

<i>Business Name</i>	<b>Chisum Trail Dairy, LLC</b>
<i>Status</i>	<b>Active</b>
<i>Initial Filing Date</i>	<b>02/16/2021</b>
<i>Entity Type</i>	<b>Domestic Limited Liability Company</b>
<i>Entity Sub-Type</i>	<b>Domestic LLC</b>
<i>Formed In</i>	<b>New Mexico</b>
<i>Record #</i>	<b>6378170</b>
<i>Agent</i>	<b>Rance C Miles 320 West Hermosa Drive, 320 West Hermosa Drive, Artesia, NM 88210</b>
<i>Organizers and Incorporators</i>	<b>The Fields Law Firm, PC: Organizer</b>
<i>Alternate Business Names</i>	

Agent: Rance C. Miles



Parcel ID: R012792

Owner: Select Milk Producers, Inc (per AcreValue Pro)

AcreValue Pro (paid subscription)

**Fairlife (owner Chisum Trail, LLC per AcreValue Pro)**

6845 Old Chisum Trail

Dexter, NM 88230

Maps to Parcel ID R016791

**Chisum Trail, LLC**

6839 Old Chisum Trail

Dexter, NM

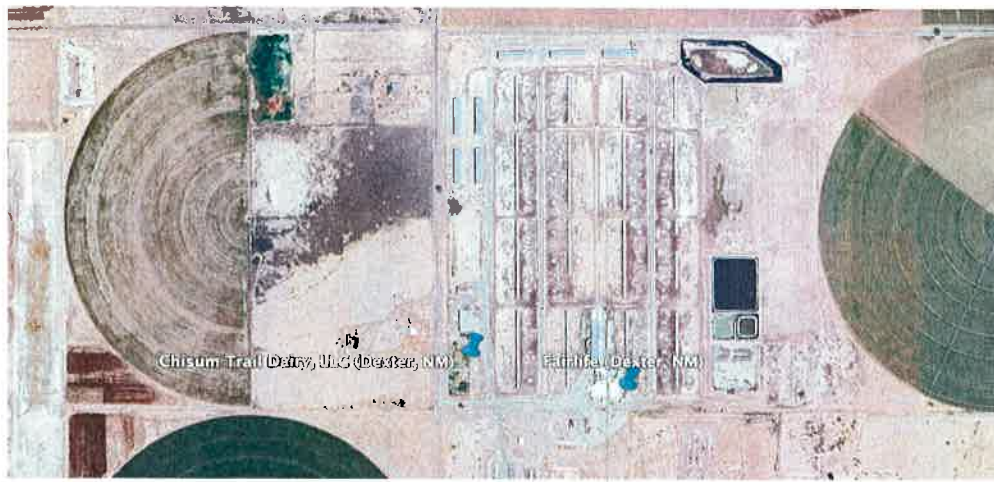
Maps to Parcel ID R016791 (same as fairlife address above)

**Par 5 Dairy (owner Chisum Trail, LLC per AcreValue Pro)**

6843 Old Chisum Trail

Dexter, NM





Fairlife (Dexter, NM location) and Chisum Trail Dairy. LLC are neighbors.

### Addresses

- Fairlife processing plant: 6845 Old Chisum Trail, Dexter, NM
- Chisum Trail Dairy, LLC: 6839 Old Chisum Trail, Dexter, NM. This is also the address listed for Par 5 Dairy
- Par 5 Dairy: 6843 vs. 6839 Old Chisum Trail, Dexter, NM vs. 6389 Dexter, NM.



New Mexico Environment Department Ground Water Quality Bureau  
Public Notices to be published on or before August 31, 2021  
Groundwater Discharge Permits Proposed for Approval

Discharge Permit	Facility	Applicant	NMED Permit Contact
1131	Chisum Trail Dairy The Public Involvement Plan may be viewed online at <a href="https://www.env.nm.gov/public-notices-2/">https://www.env.nm.gov/public-notices-2/</a> or at the NMED office in Roswell 1914 W. Second St. Roswell, NM 88201	Mitch Visser Par 5 Dairy 6839 Old Chisum Trail Dexter, NM 88230	Avery Young Environmental Scientist <a href="mailto:Avery.Young@state.nm.us">Avery.Young@state.nm.us</a> Telephone: (505) 699-8564
Closest City Dexter			Written comments or requests for a hearing for DP-1131 accepted until 5:00 p.m. MDT, October 8, 2021.
County Chaves			
<b>Notice:</b> DP-1131, Chisum Trail Dairy proposes to renew the Discharge Permit for the discharge of up to 160,000 gallons per day of wastewater from the production area of a dairy facility. Potential contaminants from this type of discharge include nitrogen compounds. The facility is located at 6839 Old Chisum Trail, approximately 3.5 miles northwest of Dexter, in Sections 35 and 36, T12S, R25E, Chaves County. Groundwater most likely to be affected is at a depth of approximately 44 feet and had a pre-discharge total dissolved solids concentration of 1,600 milligrams per liter.			

I'm not sure how Mitch Visser figures in.

<https://www.env.nm.gov/wp-content/uploads/2021/08/2021-08-PN2-ENGLISH-WEB-B.pdf>

### Connections

Rance C. Miles is **CEO of Select Milk Producers, Inc.** Chisum Trail Dairy, LLC, is connected to SMP via Rance C. Miles.

Source: New Mexico SOS Business Search:  
<https://enterprise.sos.nm.gov/search/business>

## Chisum Trail Dairy LLC

Agent: Rance C. Miles

**Filed:** February 2021 (soon after Coca Cola supposedly assumed 100% ownership of fairlife)

**Mailing address:** SMP HQ in Dallas per open open corporations:

[https://opencorporates.com/companies/us\\_nm/6378170](https://opencorporates.com/companies/us_nm/6378170)

opencorporates

The Open Database Of The Corporate World

Companies Officers

## Chisum Trail Dairy, LLC

Company Number 6378170  
Status Active  
Incorporation Date Please login to see this data  
Company Type Limited Liability Company  
Jurisdiction New Mexico LLC  
Agent Name Rance C Miles  
Agent Address 220 West Hubbard Street, Aurora, NE, 68003, USA  
Directors / Officers Please login to see this data

Recent filings for Chisum Trail Dairy, LLC

2021-02-01 BUSINESS FORMATION

Company Addresses

HEAD OFFICE ADDRESS  
220 West Hubbard Street, Aurora, NE, 68003, USA

MAILING ADDRESS  
220 West Hubbard Street, Aurora, NE, 68003, USA

## Select Milk Producers

Officers:

Tony Bos: President

Rance C. Miles: Secretary

## Fairlife (Dexter, NM)

**Managers:**

Donald de Jong

Michael McCloskey



Campaign donations to **Mark Ronchetti, 2022 Republican candidate for Governor** by Select Milk Producers and Chisum Trail Dairy, LLC:

**SMP: Maximum amount of 10,400 in 2021 and 2022**

<https://www.opensecrets.org/search?q=Select+Milk&type=donors>

Category	Contributor	Occupation	Date	Amount	Recipient	Recipient Jurisdiction
Money to Candidates	SELECT MILK PRODUCERS ARTESIA, NM 88210		12-16-2021	\$10,400.00	RONCHETTI, MARK V (R)	NM
Money to Candidates	SELECT MILK PRODUCERS ARTESIA, NM 88210		10-03-2022	\$10,400.00	RONCHETTI, MARK V (R)	NM

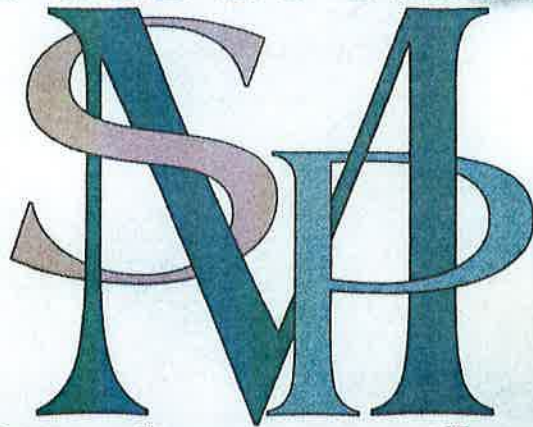
**Chisum Trail Dairy, LLC: Maximum amount of \$10,400 in 2022**

<https://www.opensecrets.org/search?order=desc&q=chisum+trail+dairy&sort=N&type=donors>

Category	Contributor	Occupation	Date	Amount	Recipient	Recipient Jurisdiction
Money to Candidates	CHISUM TRAIL DAIRY LLC DALLAS, TX 75254		10-03-2022	\$10,400.00	RONCHETTI, MARK V (R)	NM

10,400 is the maximum an entity can donate annually. SMP and Chisum Trail Dairy, LLC are separate legal entities on paper, but are they in reality? Is Chisum Trail Dairy, LLC, a shell for funneling illegal (> maximum amount legally allowed) campaign donations by Select Milk Producers (SMP)? I can find **no other** information on Chisum Trail Dairy, LLC, other than the campaign donation and a proposal for a groundwater discharge permit.

Select Milk



Producers, Inc.  
Setting a Higher Standard.



air Oaks owners Mike and Sue McCloskey published a video defending their rganizational practices and encouraging a dialogue. (Courtesy, Fair Oaks Farm)

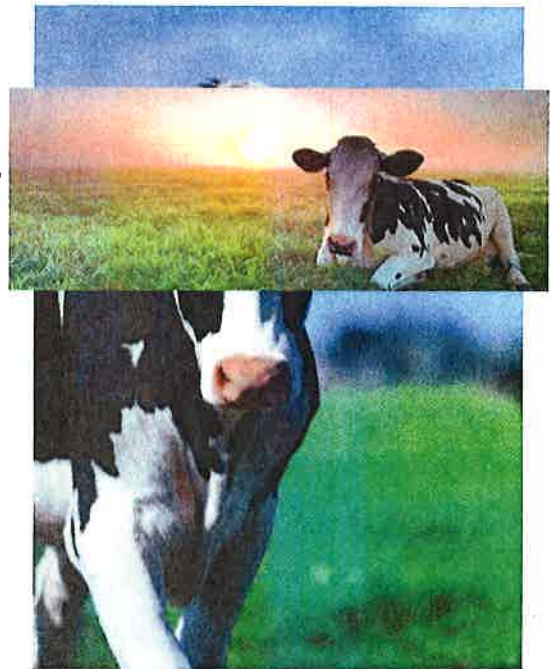


## ANIMAL WELFARE

### CARE & COMFORT

All of Select's Family Dairy Farm Members participate 100% in the National Milk Producers Federation - Farmers Assuring Responsible Management Program, or FARM Program. Prior to this program, we opened up Fair Oaks Farms so people could see exactly how our Family Dairy Farm Members operate.

For more information on what the F.A.R.M Program is [Click Here](#)



## ABOUT SELECT MILK PRODUCERS

As you pour milk over your cereal or add it to your coffee, do you ever stop and think where does it come from?

I know, silly question — cows! But have you ever thought further, like where do these cows live? How are they treated?

Select Milk Producers, Inc. takes that guesswork out. You can rest assured that the more than 9 billion pounds of milk that Select Milk produces each year comes from innovative sustainable farming and extraordinary animal care and comfort.

Select Milk formed in 1994 out of a desire by a group of family dairy producers to develop a national footprint for the perfect milk. Founded on honesty, trust, and quality, Select Milk believes in providing their customers with the highest quality fresh milk and doesn't settle for anything less.

Select Milk believes in operating all aspects of their business with the highest standards, including its cooperative of 99 family dairy farm members.

"We strive to go above and beyond what's expected in providing for our families, leading our employees, caring for our land and animals, serving our customers, producing quality milk, and serving one another. This commitment is more than our business, it's in our culture and our character. We believe in being accountable, in doing what's right, in performing at our best, in setting a higher standard."

## FAMILY OF COMPANIES

Our subsidiaries help us set a higher standard in the dairy industry, click [here](#) to learn about our family of companies.

[EVENTS](#)[NEWSROOM](#)[STORE](#)[BLOG](#)[CONTACT US](#)[REPORT ANIMAL ABUSE](#)[PARTICIPANT LOGIN](#)[Home](#)[What is FARM? ▾](#)[FARM Standards ▾](#)[Industry Role ▾](#)[FARM Resources ▾](#)

## Committed to excellent animal care

The FARM Animal Care Program helps to demonstrate dairy farmers' commitment to providing excellent care of their dairy cattle and producing safe, wholesome milk.

The FARM Animal Care Program:

- Details animal care guidelines using the latest research and best management practices
- Implements on-farm evaluations by trained evaluators who help identify strengths and outline improvements for dairy farms
- Ensures integrity of the program through third-party verification

See our results in our "Year in Review"



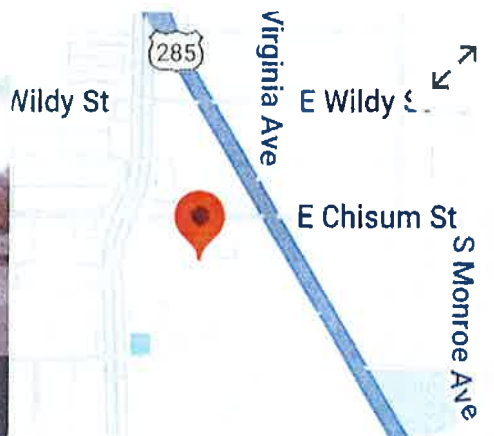
[EVENTS](#)[NEWSROOM](#)[STORE](#)[BLOG](#)[CONTACT US](#)[REPORT ANIMAL ABUSE](#)[PARTICIPANT LOGIN](#)[Home](#)[What is FARM? ▾](#)[FARM Standards ▾](#)[Industry Role ▾](#)[FARM Resources ▾](#)

## Meet the Team

### Mike McCloskey

#### Fair Oaks Farms

Mike McCloskey is Co-Founder and CEO of Select Milk Producers, the sixth largest milk cooperative in the country. He is also Chairman of the Board for Fair Oaks Farms, the nation's largest agritourism attraction located in Northwest Indiana. Dr. McCloskey's home dairy is Prairies Edge Dairy Farms, also in Northwest Indiana, which milks 15,000 cows living in free-stall barns and is recognized as being the leading dairy in the U.S. from many perspectives. Prairies Edge Dairy Farms harvest their cow manure and through digesters create electricity to power their farms as well as creating bio-based CNG to fuel 42 milk trucks and thus displacing 2 million gallons of diesel use annually.



# Chaves County Sheriff's Office

3.3 ★★☆☆ 18 Google reviews



County government office in Roswell, New Mexico



Website



Directions



Reviews



Save



Share



Call

**Located in:** Chaves County Administrative Center

**Address:** 1 St Mary's Pl #130, Roswell, NM 88203

**Phone:** (575) 624-6500

**Hours:** Open · Closes 5 PM ▼

[Suggest an edit](#) · [Own this business?](#)

[Your County »](#) [Departments »](#)

# Sheriff's Office

Font Size: [+](#) [-](#) [+](#) [Share & Bookmark](#) [Feedback](#) [Print](#)

[Roswell Narcotics Anonymous Meetings](#)



**Non Emergency**  
**(575) 624-7590**  
**Administration/ Records**  
**(575)624-6500**

## STAFF

### Herrington, Mike

Sheriff

[\(575\) 624-6500](#)

[Email](#)

### Yslas, Charles

Undersheriff

[\(575\) 624-6500](#)

[Email](#)

### Garcia, Janet

Administrator

[\(575\) 624-6511](#)

[Email](#)

[More Staff](#)

## CONTACT

TextMyGov  
**ELECTIONS**





**WOODCREST DAIRY**  
PAYROLL ACCOUNT  
3105 SCHOOL ROAD  
ROSWELL, NM 88203  
575-624-0122

VALLEY BANK OF COMMERCE  
ROSWELL, NM 88201

05-312/1122

22007

1/31/2025

PAY TO THE  
ORDER OF

\$ \*\*1,573.90

One Thousand Five Hundred Seventy-Three and 90/100

DOLLAR

Roswell, NM 88201

MEMO

Pay Period: 01/16/2025 - 01/31/2025

⑈022007⑈ ⑈1122031220 001201255⑈

**WOODCREST DAIRY**

22007

Employee

Roswell, NM 88201

SSN

\*\*\*-6788

Pay Period: 01/16/2025 - 01/31/2025

Pay Date: 01/31/2025

Earnings and Hours	Qty	Rate	Current	YTD Amount
Salary			1,800.00	3,450.00

Taxes	Current	YTD Amount
NM - Workers' Comp Fee Emp.	0.50	-2.00
Medicare Employee Addl Tax	0.00	
Federal Withholding	-55.00	-95.00
Social Security Employee	-111.60	-213.00
Medicare Employee	-26.10	-50.03
NM - Withholding	-33.40	-60.53
	-226.10	-421.46

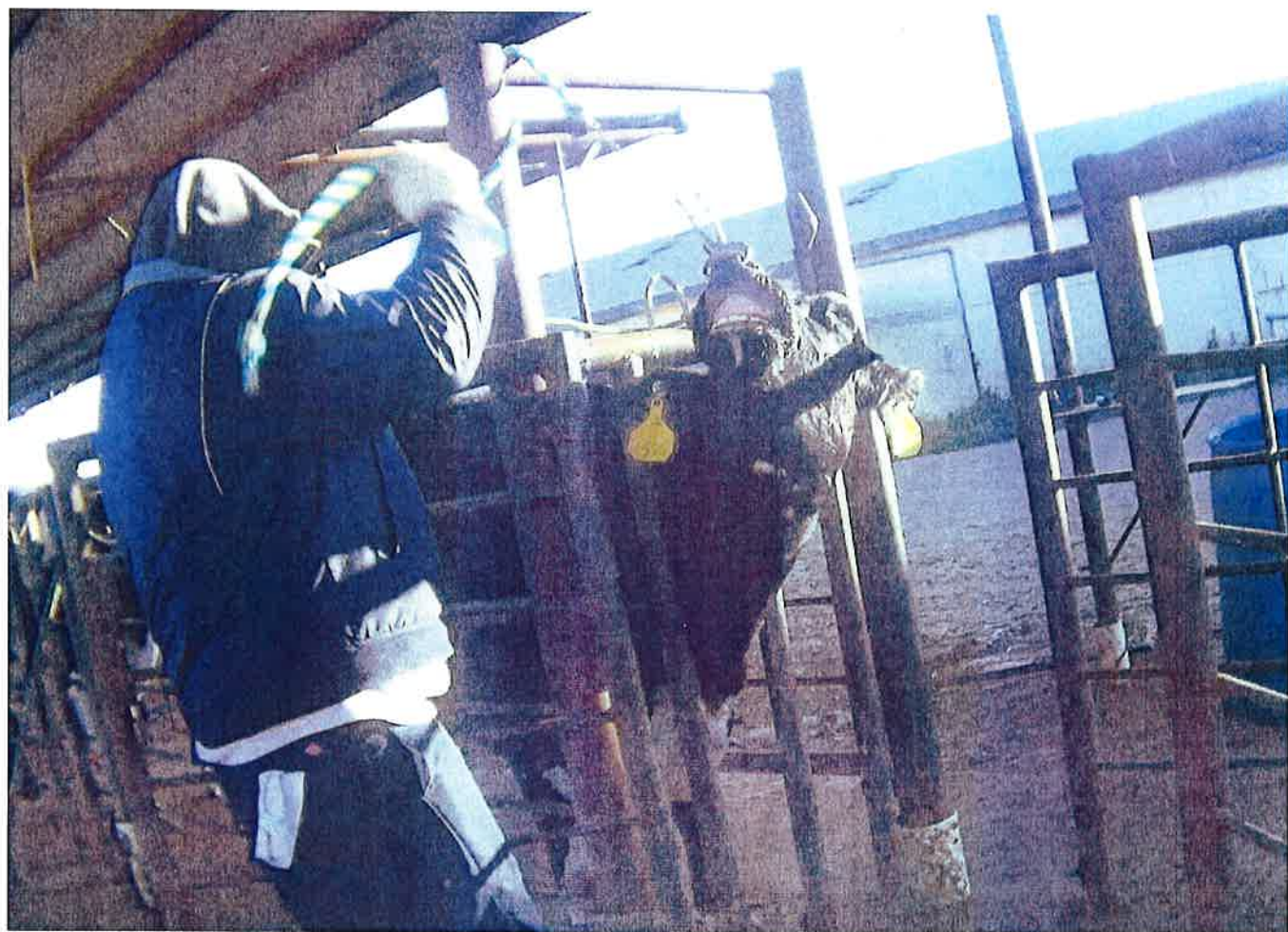
Net Pay

1,573.90 3,028.54

# CRIMES VIOLATIONS

---





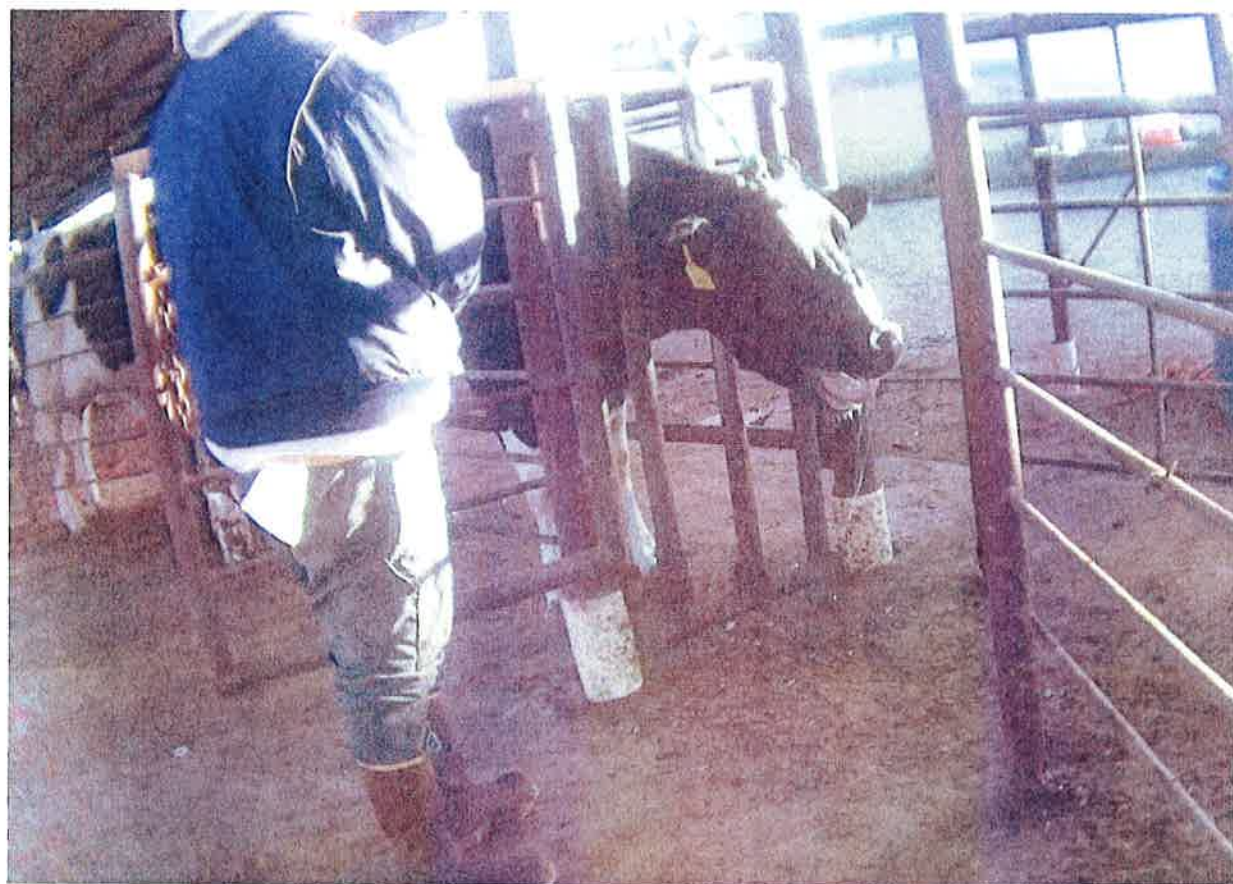
























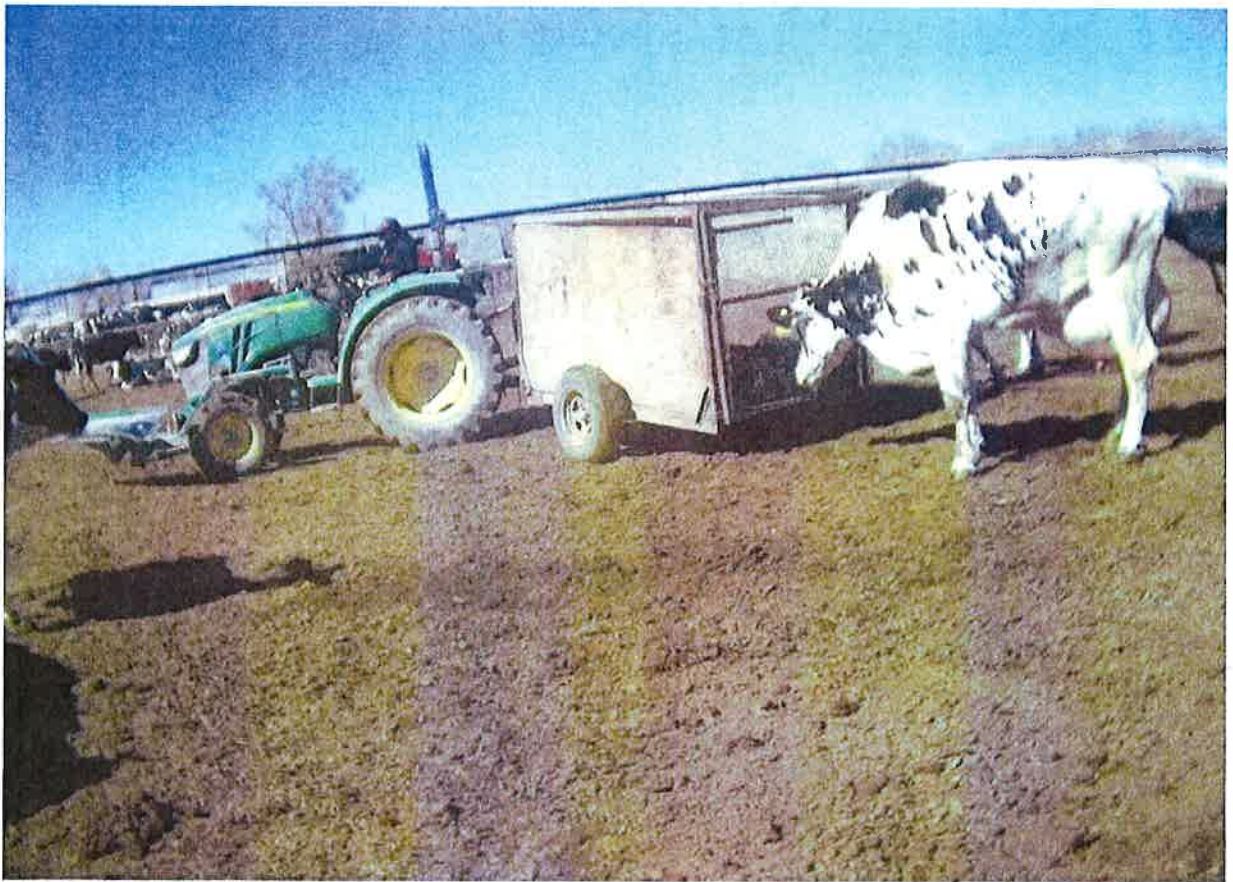




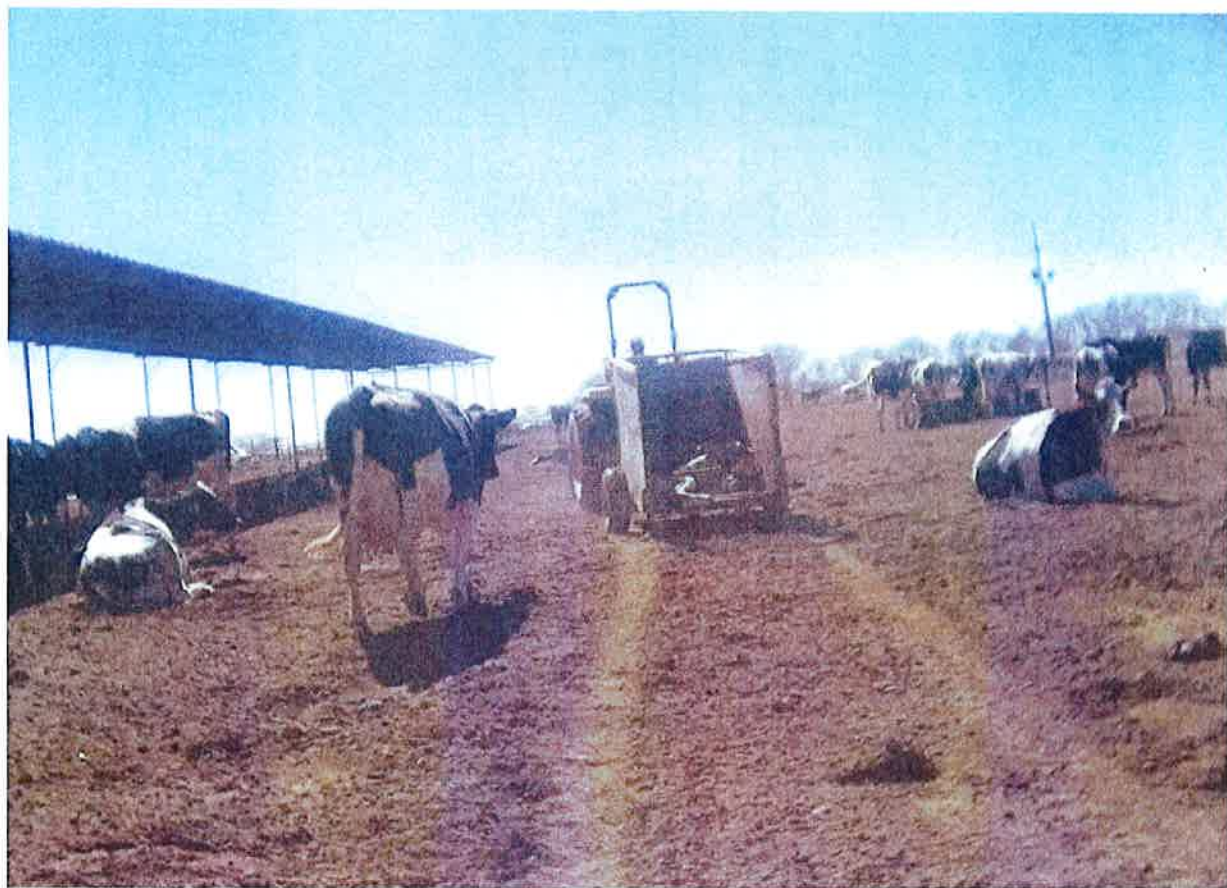
















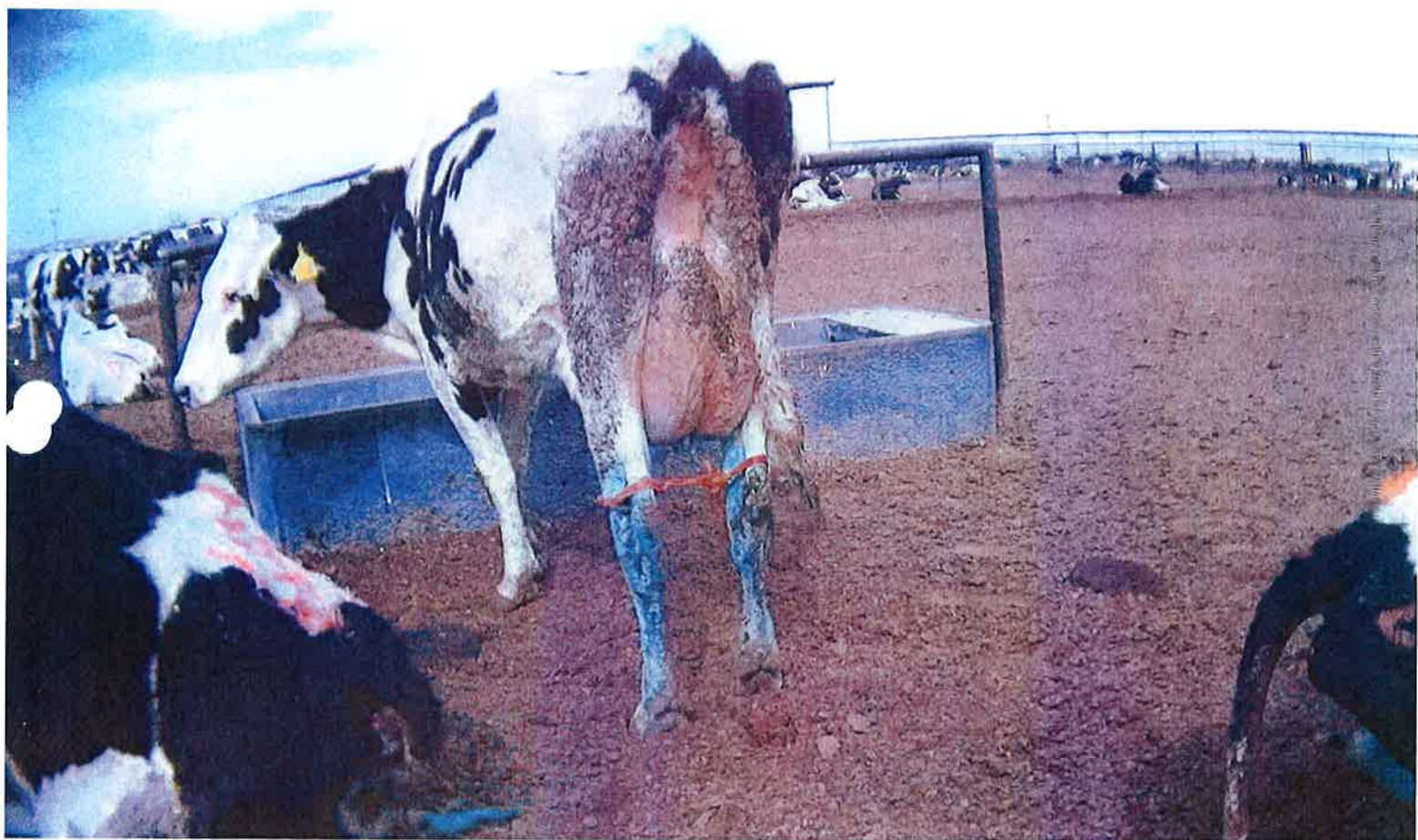




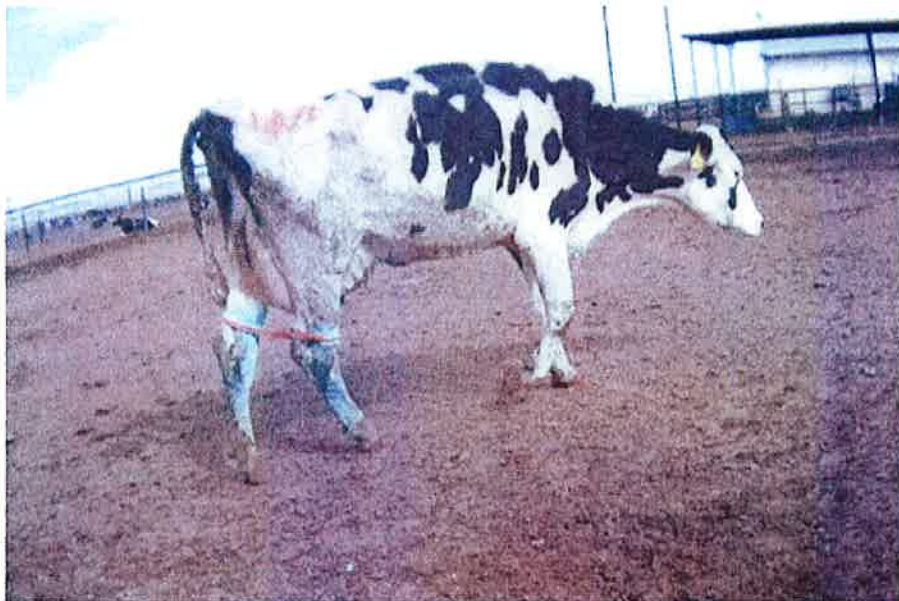












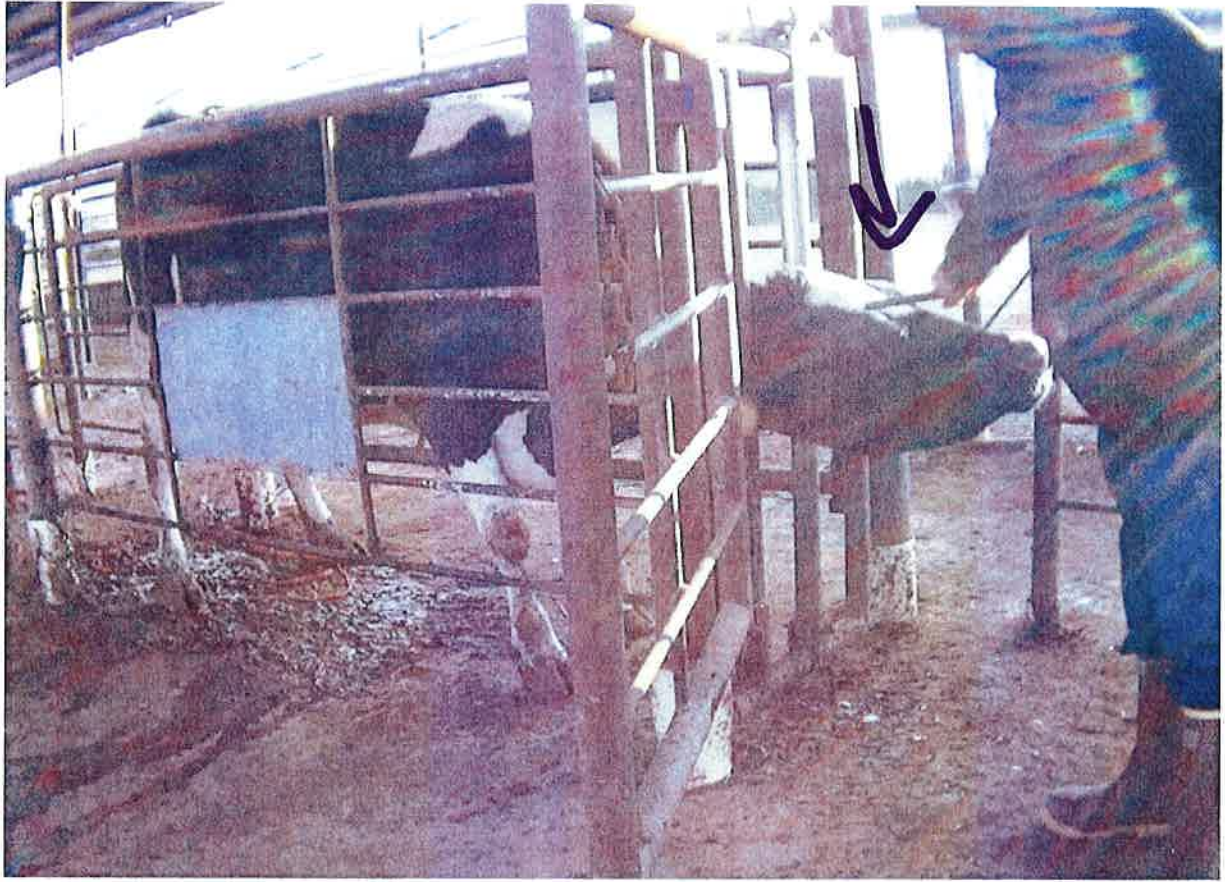




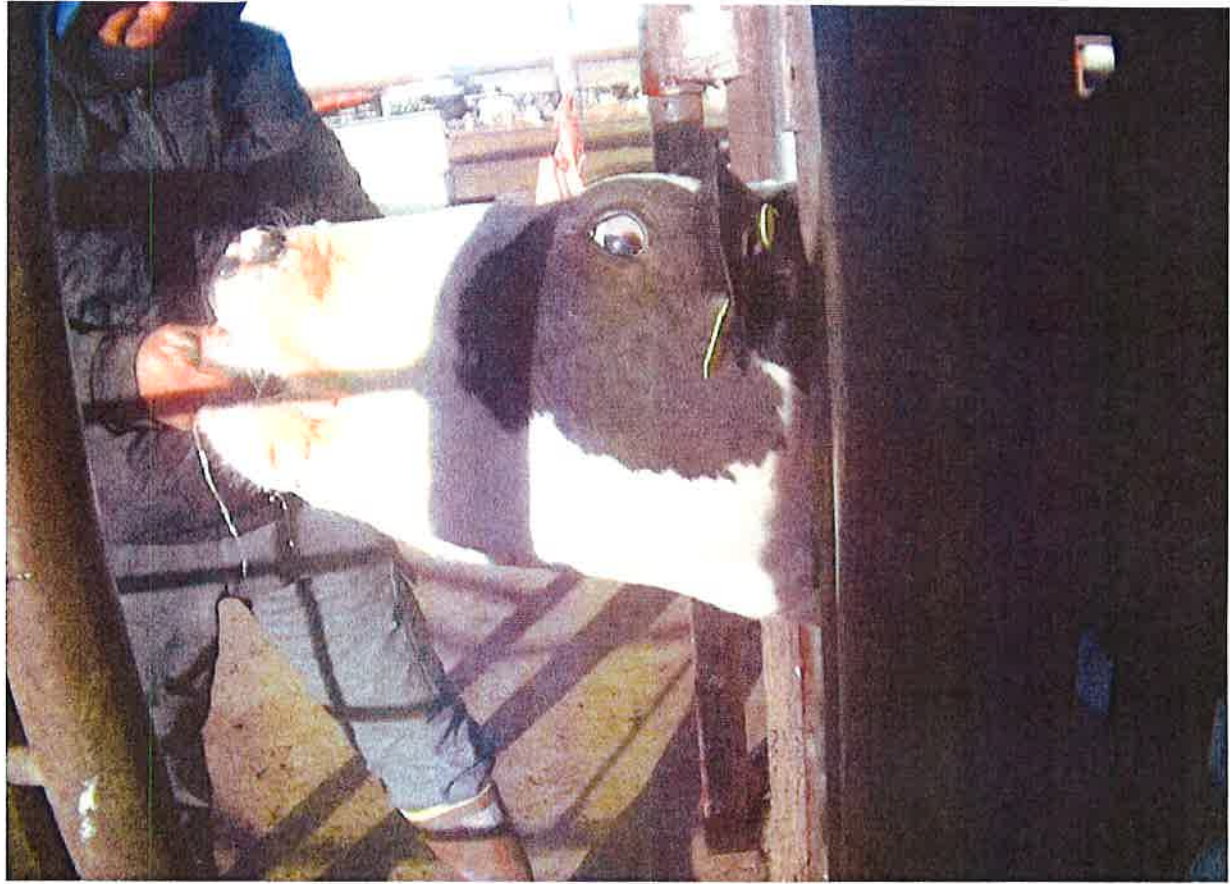




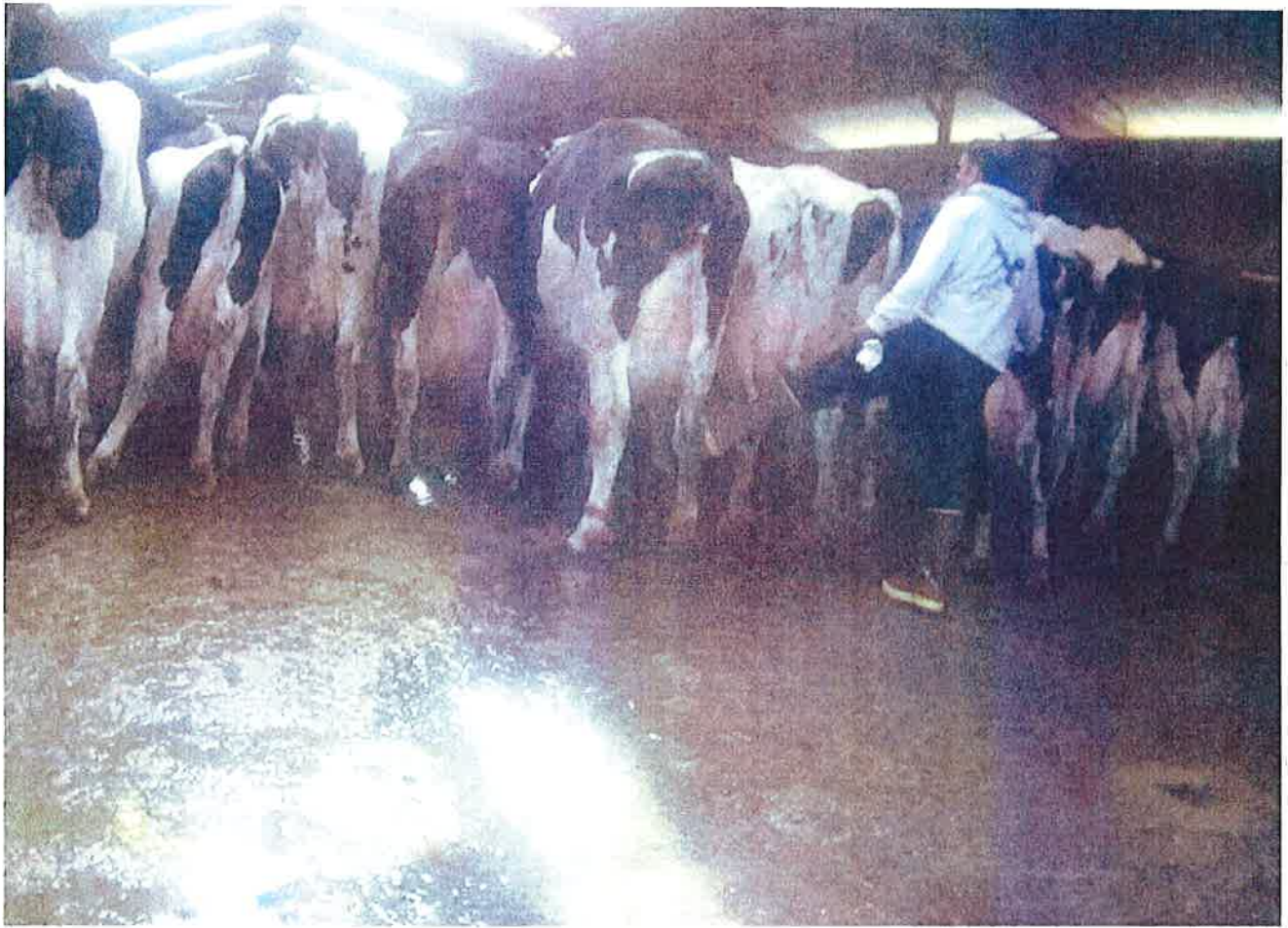




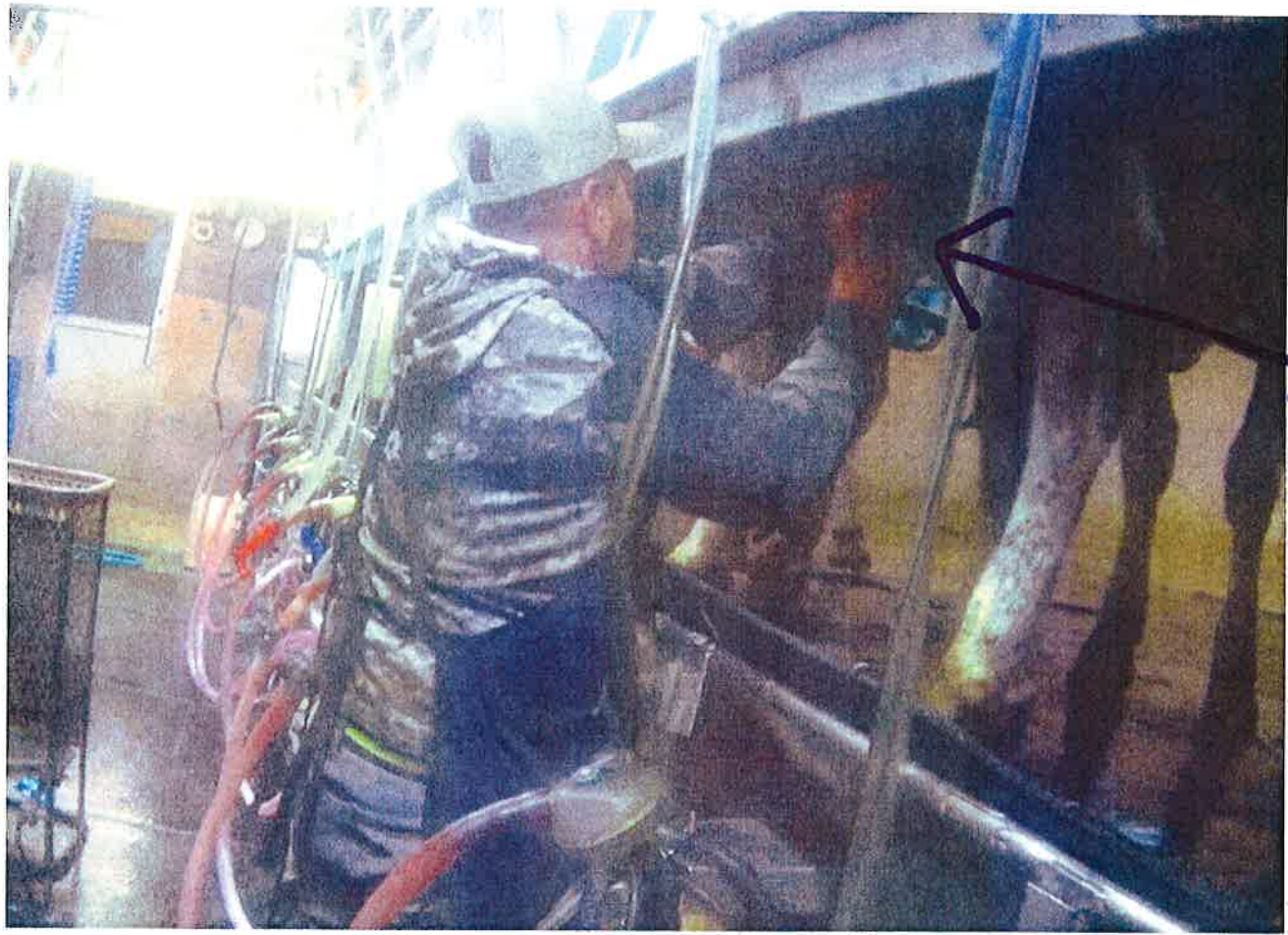












snapping tail











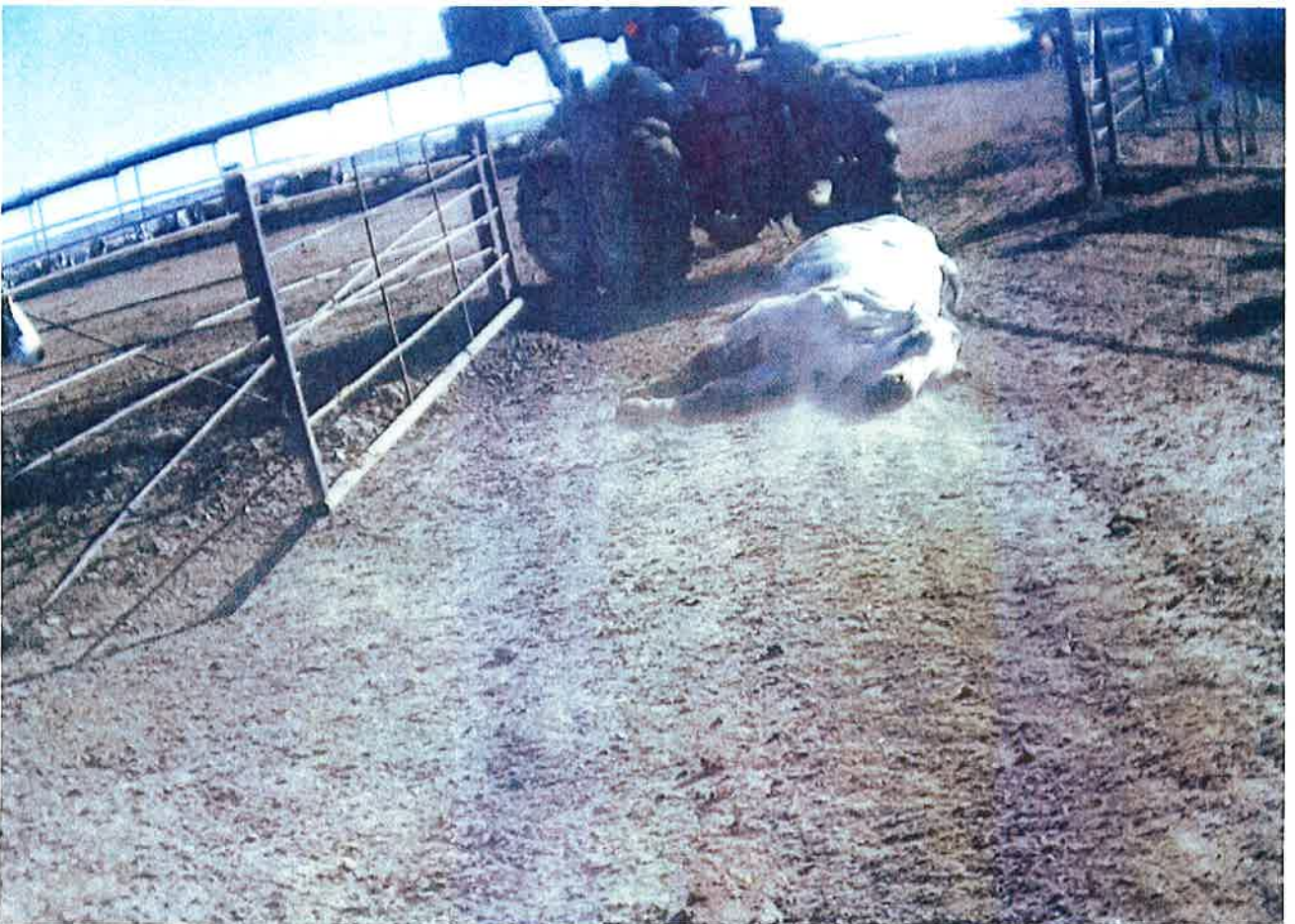














# Workers

---



Medical Area





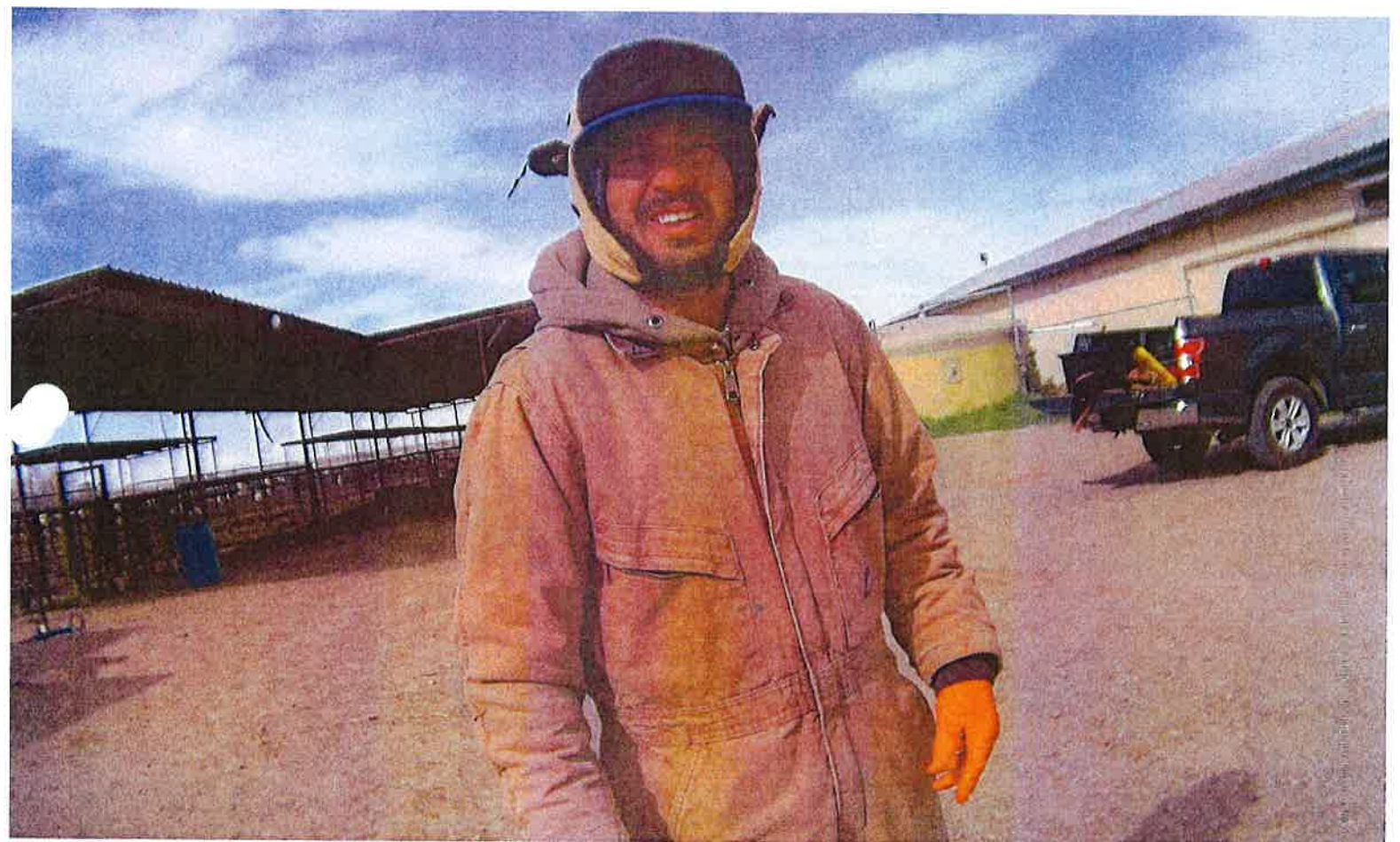
Medical Area

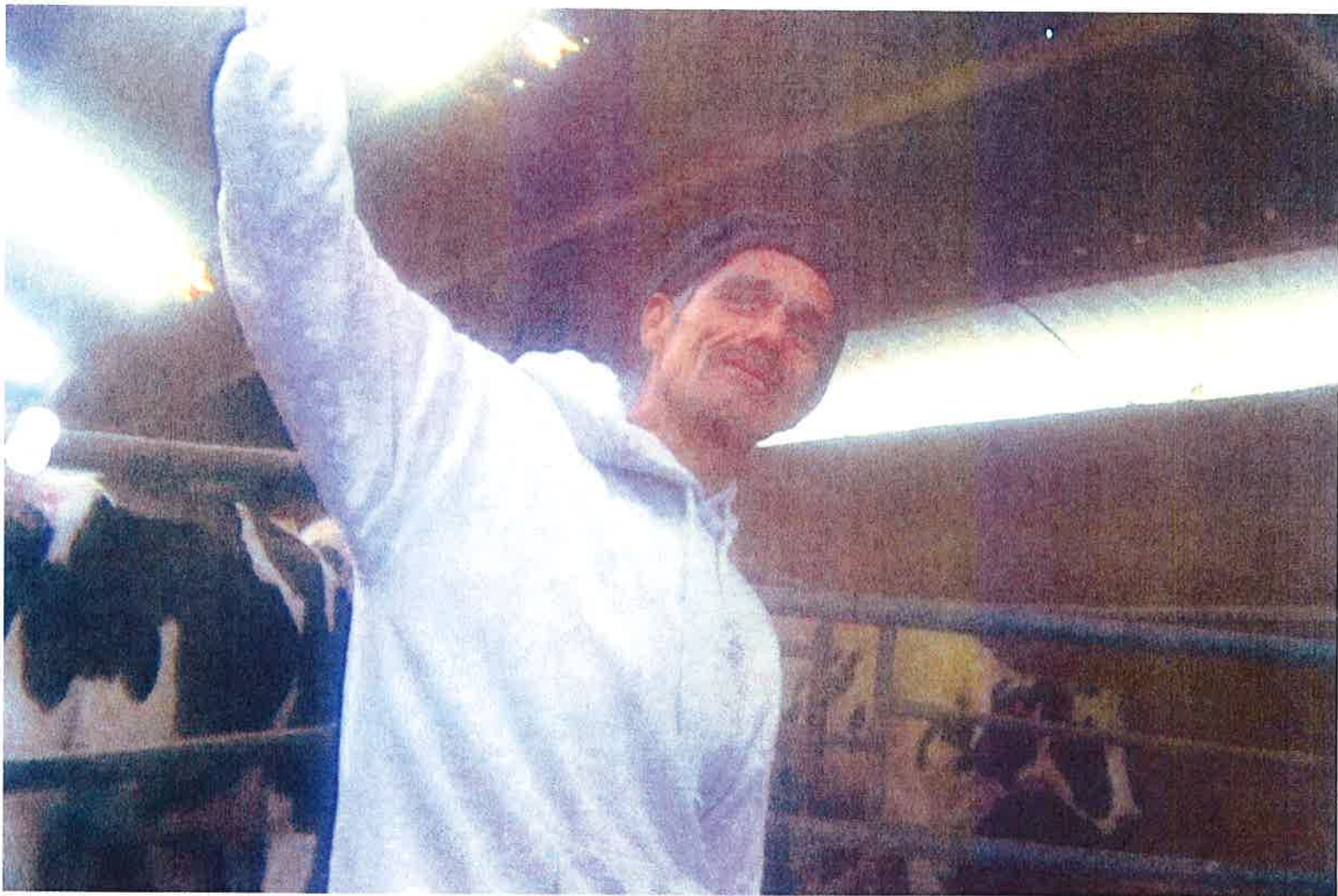




Birthing Area







Milking Area









MilKing Area